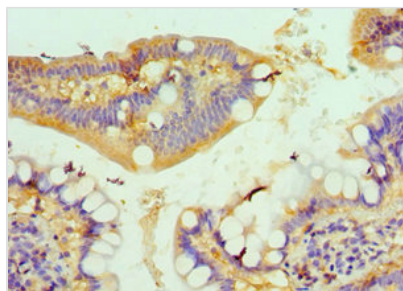




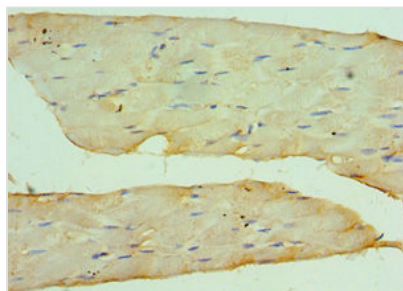
KAT14 Antibody

Product Code	CSB-PA880995ESR2HU
Storage	Upon receipt, store at -20°C or -80°C. Avoid repeated freeze.
Uniprot No.	Q9H8E8
Immunogen	Recombinant Human Cysteine-rich protein 2-binding protein (523-782AA)
Raised In	Rabbit
Species Reactivity	Human
Tested Applications	ELISA, IHC; Recommended dilution: IHC:1:20-1:200
Form	Liquid
Conjugate	Non-conjugated
Storage Buffer	PBS with 0.02% sodium azide, 50% glycerol, pH7.3.
Purification Method	Antigen Affinity Purified
Isotype	IgG
Clonality	Polyclonal
Alias	Cysteine-rich protein 2-binding protein (CSRP2-binding protein) (ADA2A-containing complex subunit 2) (ATAC2) (CRP2-binding partner) (CRP2BP) (Lysine acetyltransferase 14), KAT14, CSRP2BP
Immunogen Species	Homo sapiens (Human)
Research Area	Epigenetics and Nuclear Signaling
Target Names	KAT14

Image



Immunohistochemistry of paraffin-embedded human small intestine tissue using CSB-PA880995ESR2HU at dilution of 1:100



Immunohistochemistry of paraffin-embedded human skeletal muscle tissue using CSB-PA880995ESR2HU at dilution of 1:100



Usage

For Research Use Only. Not for use in diagnostic or therapeutic procedures.