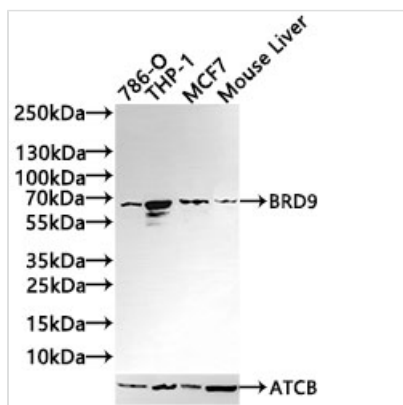




# BRD9 Antibody

<b>Product Code</b>	CSB-PA888000ESR2HU
<b>Storage</b>	Upon receipt, store at -20°C or -80°C. Avoid repeated freeze.
<b>Uniprot No.</b>	Q9H8M2
<b>Immunogen</b>	Synthetic protein corresponding to residues near the C terminal of human BRD9
<b>Raised In</b>	Rabbit
<b>Species Reactivity</b>	Human, Mouse
<b>Tested Applications</b>	ELISA, WB, IHC; Recommended dilution: WB:1:500-1:2000, IHC:1:50-1:200
<b>Form</b>	Liquid
<b>Storage Buffer</b>	Rabbit IgG in pH7.4 PBS, 0.05% NaN <sub>3</sub> , 40% Glycerol.
<b>Purification Method</b>	Antigen Affinity Purified
<b>Isotype</b>	IgG
<b>Clonality</b>	Polyclonal
<b>Product Type</b>	Polyclonal Antibody
<b>Immunogen Species</b>	Homo sapiens (Human)
<b>Research Area</b>	Epigenetics and Nuclear Signaling
<b>Target Names</b>	BRD9

## Image



### Western Blot

Positive WB detected in: 786-O whole cell lysate(30µg), THP-1 whole cell lysate(30µg), MCF7 whole cell lysate(30µg), Mouse Liver tissue lysate(20µg)

All lanes: BRD9 antibody at 1:1000

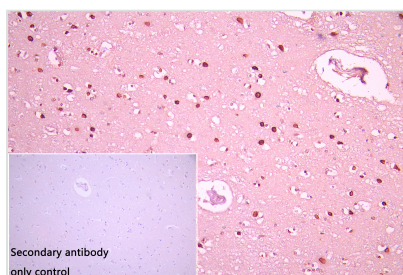
### Secondary

Goat polyclonal to rabbit IgG at 1/40000 dilution

Predicted band size: 67,23,54,27,56,61 kDa

Observed band size: 67 kDa

Exposure time: 120s



IHC image of CSB-PA888000ESR2HU diluted at 1:100 and staining in paraffin-embedded human brain performed on a Leica Bond™ system.

After dewaxing and hydration, antigen retrieval was mediated by high pressure in a citrate buffer (pH 6.0). Section was blocked with 10% normal goat serum 30min at RT. Then primary antibody (1% BSA) was incubated at 4°C overnight. The primary is detected by a Goat anti-rabbit polymer IgG labeled by HRP and visualized using 0.05% DAB. Secondary antibody only control: uses 1% BSA instead of primary antibody



---

**Usage**

For Research Use Only. Not for use in diagnostic or therapeutic procedures.