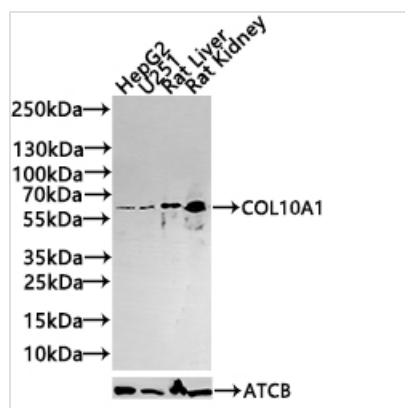




COL10A1 Antibody

Product Code	CSB-PA005715ESR2HU
Storage	Upon receipt, store at -20°C or -80°C. Avoid repeated freeze.
Uniprot No.	Q03692
Immunogen	A synthesized peptide derived from human Collagen X alpha 1
Raised In	Rabbit
Species Reactivity	Human, Rat
Tested Applications	ELISA, WB; Recommended dilution: WB:1:500-1:2000
Form	Liquid
Conjugate	Non-conjugated
Storage Buffer	Rabbit IgG in 10mM phosphate buffered saline , pH 7.4, 150mM sodium chloride, 0.05% BSA, 0.02% sodium azide and 50% glycerol.
Purification Method	Antigen Affinity Purified
Isotype	IgG
Clonality	Polyclonal
Product Type	Polyclonal Antibody
Immunogen Species	Homo sapiens (Human)
Research Area	Signal Transduction
Target Names	COL10A1

Image



Western Blot

Positive WB detected in: HepG2 whole cell lysate(30µg), U251 whole cell lysate(30µg), Rat Liver tissue lysate(30µg), Rat Kidney tissue lysate(30µg)

All lanes: COL10A1 antibody at 1:1000

Secondary

Goat polyclonal to rabbit IgG at 1/40000 dilution

Predicted band size: 67 kDa

Observed band size: 67 kDa

Exposure time: 120s

Usage

For Research Use Only. Not for use in diagnostic or therapeutic procedures.