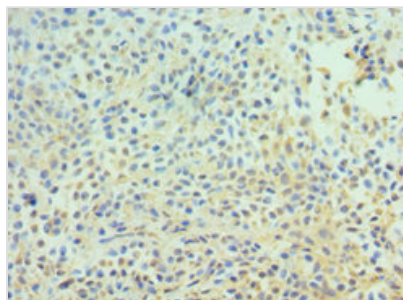




CDC16 Antibody

Product Code	CSB-PA618753ESR1HU
Storage	Upon receipt, store at -20°C or -80°C. Avoid repeated freeze.
Uniprot No.	Q13042
Immunogen	Recombinant Human Cell division cycle protein 16 homolog protein (371-620AA)
Raised In	Rabbit
Species Reactivity	Human
Tested Applications	ELISA, IHC; Recommended dilution: IHC:1:20-1:200
Form	Liquid
Conjugate	Non-conjugated
Storage Buffer	PBS with 0.02% sodium azide, 50% glycerol, pH7.3.
Purification Method	Antigen Affinity purified
Isotype	IgG
Clonality	Polyclonal
Alias	Cell division cycle protein 16 homolog (Anaphase-promoting complex subunit 6) (APC6) (CDC16 homolog) (CDC16Hs) (Cyclosome subunit 6), CDC16, ANAPC6
Immunogen Species	Homo sapiens (Human)
Research Area	Cell Biology
Target Names	CDC16

Image



Immunohistochemistry of paraffin-embedded human breast cancer using CSB-PA618753ESR1HU at dilution of 1:100