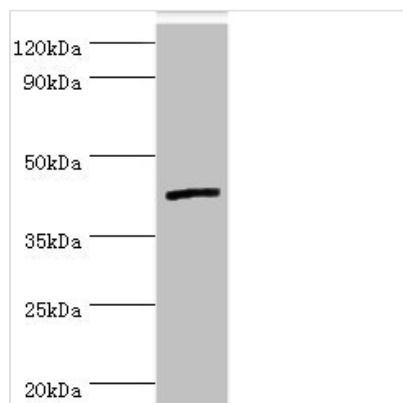




# IL13RA2 Antibody

<b>Product Code</b>	CSB-PA618901ESR1HU
<b>Storage</b>	Upon receipt, store at -20°C or -80°C. Avoid repeated freeze.
<b>Uniprot No.</b>	Q14627
<b>Immunogen</b>	Recombinant Human Interleukin-13 receptor subunit alpha-2 protein (27-343AA)
<b>Raised In</b>	Rabbit
<b>Species Reactivity</b>	Human
<b>Tested Applications</b>	ELISA, WB, IHC; Recommended dilution: WB:1:200-1:1000, IHC:1:20-1:200
<b>Form</b>	Liquid
<b>Conjugate</b>	Non-conjugated
<b>Storage Buffer</b>	PBS with 0.02% sodium azide, 50% glycerol, pH7.3.
<b>Purification Method</b>	Antigen Affinity Purified
<b>Isotype</b>	IgG
<b>Clonality</b>	Polyclonal
<b>Alias</b>	Interleukin-13 receptor subunit alpha-2 (IL-13 receptor subunit alpha-2) (IL-13R subunit alpha-2) (IL-13R-alpha-2) (IL-13RA2) (Interleukin-13-binding protein) (CD antigen CD213a2), IL13RA2, IL13R
<b>Immunogen Species</b>	Homo sapiens (Human)
<b>Research Area</b>	Immunology
<b>Target Names</b>	IL13RA2

## Image



Western blot

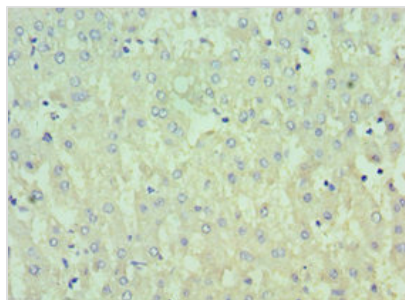
All lanes: Interleukin-13 receptor subunit alpha-2 antibody at 5µg/ml + Hela whole cell lysate

Secondary

Goat polyclonal to rabbit IgG at 1/10000 dilution

Predicted band size: 44 kDa

Observed band size: 44 kDa



Immunohistochemistry of paraffin-embedded human liver tissue using CSB-PA618901ESR1HU at dilution of 1:100

---

**Usage**

For Research Use Only. Not for use in diagnostic or therapeutic procedures.