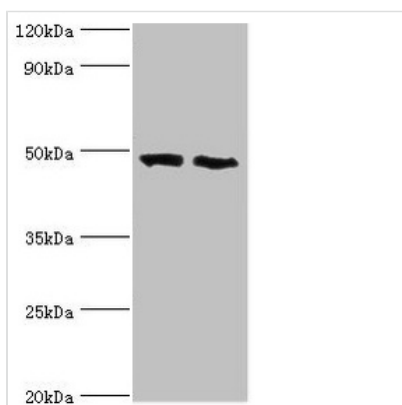




FDFT1 Antibody

Product Code	CSB-PA008562ESR1HU
Storage	Upon receipt, store at -20°C or -80°C. Avoid repeated freeze.
Uniprot No.	P37268
Immunogen	Recombinant Human Squalene synthase protein (1-260AA)
Raised In	Rabbit
Species Reactivity	Human, Mouse
Tested Applications	ELISA, WB, IHC, IF; Recommended dilution: WB:1:1000-1:5000, IHC:1:20-1:200, IF:1:50-1:200
Form	Liquid
Conjugate	Non-conjugated
Storage Buffer	PBS with 0.02% sodium azide, 50% glycerol, pH7.3.
Purification Method	Antigen Affinity Purified
Isotype	IgG
Clonality	Polyclonal
Alias	Squalene synthase (SQS) (SS) (EC 2.5.1.21) (FPP:FPP farnesyltransferase) (Farnesyl-diphosphate farnesyltransferase), FDFT1
Immunogen Species	Homo sapiens (Human)
Research Area	Cardiovascular
Target Names	FDFT1

Image



Western blot

All lanes: FDFT1 antibody at 2µg/ml

Lane 1: 293T whole cell lysate

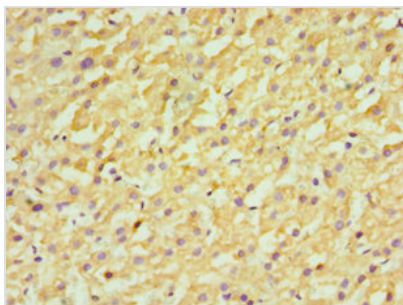
Lane 2: Mouse liver tissue

Secondary

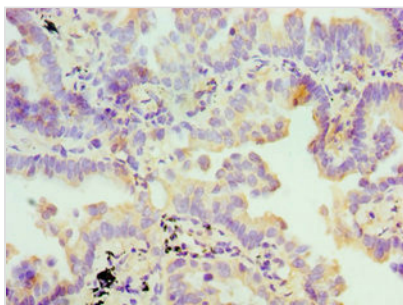
Goat polyclonal to rabbit IgG at 1/10000 dilution

Predicted band size: 49, 41, 39, 36, 44 kDa

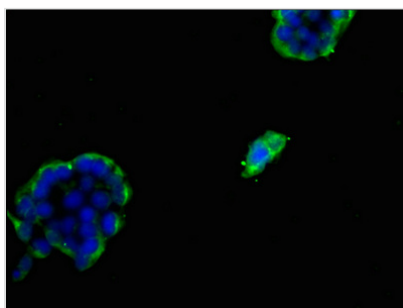
Observed band size: 49 kDa



Immunohistochemistry of paraffin-embedded human liver cancer using CSB-PA008562ESR1HU at dilution of 1:100



Immunohistochemistry of paraffin-embedded human lung cancer using CSB-PA008562ESR1HU at dilution of 1:100



Immunofluorescent analysis of 293 cells using CSB-PA008562ESR1HU at dilution of 1:100 and Alexa Fluor 488-conjugated AffiniPure Goat Anti-Rabbit IgG(H+L)

Usage

For Research Use Only. Not for use in diagnostic or therapeutic procedures.