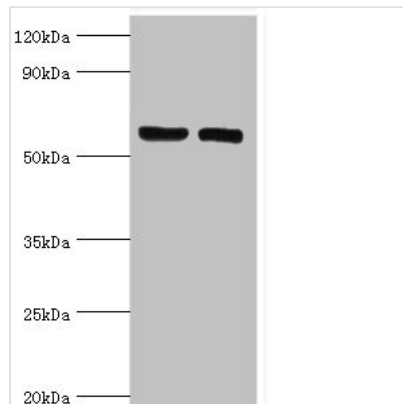




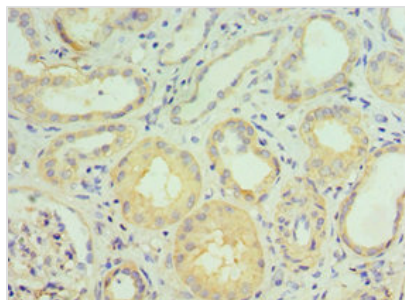
# GGA2 Antibody

|                            |   |
|----------------------------|---|
| <b>Product Code</b>        | CSB-PA891942ESR1HU  |
| <b>Storage</b>             | Upon receipt, store at -20°C or -80°C. Avoid repeated freeze.   |
| <b>Uniprot No.</b>         | Q9UJY4  |
| <b>Immunogen</b>           | Recombinant Human ADP-ribosylation factor-binding protein GGA2 protein (1-300AA)  |
| <b>Raised In</b>           | Rabbit  |
| <b>Species Reactivity</b>  | Human, Mouse, Rat   |
| <b>Tested Applications</b> | ELISA, WB, IHC; Recommended dilution: WB:1:200-1:1000, IHC:1:20-1:200   |
| <b>Form</b>                | Liquid  |
| <b>Conjugate</b>           | Non-conjugated  |
| <b>Storage Buffer</b>      | PBS with 0.02% sodium azide, 50% glycerol, pH7.3.   |
| <b>Purification Method</b> | Antigen Affinity Purified   |
| <b>Isotype</b>             | IgG   |
| <b>Clonality</b>           | Polyclonal  |
| <b>Alias</b>               | ADP-ribosylation factor-binding protein GGA2 (Gamma-adaptin-related protein 2) (Golgi-localized, gamma ear-containing, ARF-binding protein 2) (VHS domain and ear domain of gamma-adaptin) (Vear), GGA2, KIAA1080 |
| <b>Immunogen Species</b>   | Homo sapiens (Human)  |
| <b>Research Area</b>       | Signal Transduction   |
| <b>Target Names</b>        | GGA2  |

## Image



Western blot  
 All lanes: ADP-ribosylation factor-binding protein  
 GGA2 antibody at 10µg/ml  
 Lane 1: Rat brain tissue  
 Lane 2: Mouse liver tissue  
 Secondary  
 Goat polyclonal to rabbit IgG at 1/10000 dilution  
 Predicted band size: 67 kDa  
 Observed band size: 67 kDa



Immunohistochemistry of paraffin-embedded human kidney tissue using CSB-PA891942ESR1HU at dilution of 1:100

---

**Usage**

For Research Use Only. Not for use in diagnostic or therapeutic procedures.