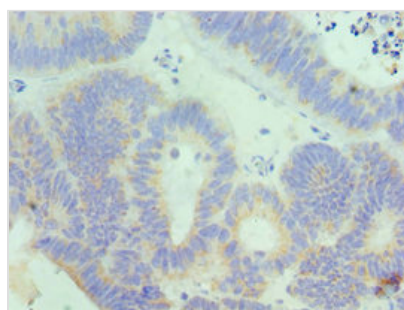




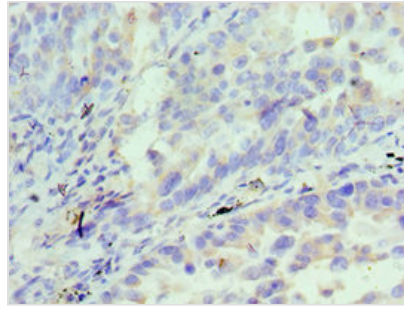
# IL18RAP Antibody

<b>Product Code</b>	CSB-PA011611ESR2HU
<b>Storage</b>	Upon receipt, store at -20°C or -80°C. Avoid repeated freeze.
<b>Uniprot No.</b>	O95256
<b>Immunogen</b>	Recombinant Human Interleukin-18 receptor accessory protein (390-599AA)
<b>Raised In</b>	Rabbit
<b>Species Reactivity</b>	Human
<b>Tested Applications</b>	ELISA, IHC; Recommended dilution: IHC:1:20-1:200
<b>Form</b>	Liquid
<b>Conjugate</b>	Non-conjugated
<b>Storage Buffer</b>	PBS with 0.02% sodium azide, 50% glycerol, pH7.3.
<b>Purification Method</b>	Antigen Affinity Purified
<b>Isotype</b>	IgG
<b>Clonality</b>	Polyclonal
<b>Alias</b>	Interleukin-18 receptor accessory protein (IL-18 receptor accessory protein) (IL-18RAcP) (Accessory protein-like) (AcPL) (CD218 antigen-like family member B) (CDw218b) (IL-1R accessory protein-like) (IL-1RAcPL) (Interleukin-1 receptor 7) (IL-1R-7) (IL-1R7) (Interleukin-18 receptor accessory protein-like) (Interleukin-18 receptor beta) (IL-18R-beta) (IL-18Rbeta) (CD antigen CD218b), IL18RAP, IL1R7
<b>Immunogen Species</b>	Homo sapiens (Human)
<b>Research Area</b>	Immunology
<b>Target Names</b>	IL18RAP

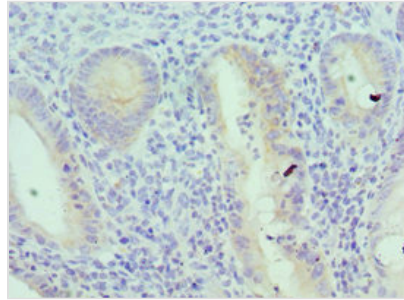
## Image



Immunohistochemistry of paraffin-embedded human colon cancer using CSB-PA011611ESR2HU at dilution of 1:100



Immunohistochemistry of paraffin-embedded human lung cancer using CSB-PA011611ESR2HU at dilution of 1:100



Immunohistochemistry of paraffin-embedded human epityphlon tissue using CSB-PA011611ESR2HU at dilution of 1:100

## Usage

For Research Use Only. Not for use in diagnostic or therapeutic procedures.