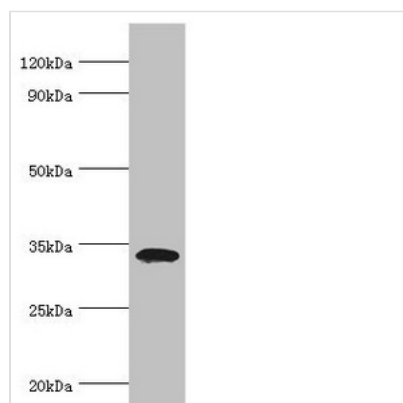




# LDLRAP1 Antibody

<b>Product Code</b>	CSB-PA729190ESR1HU
<b>Storage</b>	Upon receipt, store at -20°C or -80°C. Avoid repeated freeze.
<b>Uniprot No.</b>	Q5SW96
<b>Immunogen</b>	Recombinant Human Low density lipoprotein receptor adapter protein 1 protein (59-308AA)
<b>Raised In</b>	Rabbit
<b>Species Reactivity</b>	Human, Mouse
<b>Tested Applications</b>	ELISA, WB, IHC; Recommended dilution: WB:1:500-1:2000, IHC:1:20-1:200
<b>Form</b>	Liquid
<b>Conjugate</b>	Non-conjugated
<b>Storage Buffer</b>	PBS with 0.02% sodium azide, 50% glycerol, pH7.3.
<b>Purification Method</b>	Antigen Affinity Purified
<b>Isotype</b>	IgG
<b>Clonality</b>	Polyclonal
<b>Alias</b>	Low density lipoprotein receptor adapter protein 1 (Autosomal recessive hypercholesterolemia protein), LDLRAP1, ARH
<b>Immunogen Species</b>	Homo sapiens (Human)
<b>Research Area</b>	Cardiovascular
<b>Target Names</b>	LDLRAP1

## Image



Western blot

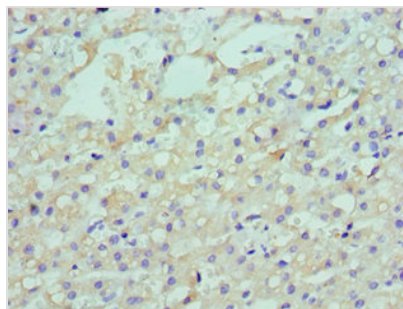
All lanes: Low density lipoprotein receptor adapter protein 1 antibody at 4μg/ml + Mouse liver tissue

Secondary

Goat polyclonal to rabbit IgG at 1/10000 dilution

Predicted band size: 34 kDa

Observed band size: 34 kDa



Immunohistochemistry of paraffin-embedded human liver cancer using CSB-PA729190ESR1HU at dilution of 1:100