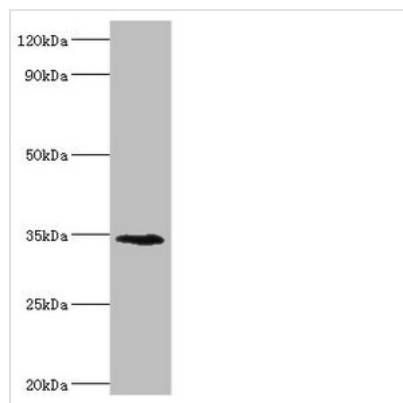




LYVE1 Antibody

Product Code	CSB-PA897574ESR1HU
Storage	Upon receipt, store at -20°C or -80°C. Avoid repeated freeze.
Uniprot No.	Q9Y5Y7
Immunogen	Recombinant Human Lymphatic vessel endothelial hyaluronic acid receptor 1 protein (20-238AA)
Raised In	Rabbit
Species Reactivity	Human, Mouse
Tested Applications	ELISA, WB, IHC; Recommended dilution: WB:1:500-1:2000, IHC:1:20-1:200
Form	Liquid
Conjugate	Non-conjugated
Storage Buffer	PBS with 0.02% sodium azide, 50% glycerol, pH7.3.
Purification Method	Antigen Affinity Purified
Isotype	IgG
Clonality	Polyclonal
Alias	Lymphatic vessel endothelial hyaluronic acid receptor 1 (LYVE-1) (Cell surface retention sequence-binding protein 1) (CRSBP-1) (Extracellular link domain-containing protein 1) (Hyaluronic acid receptor), LYVE1, CRSBP1 HAR XLKD1
Immunogen Species	Homo sapiens (Human)
Research Area	Cardiovascular
Target Names	LYVE1

Image



Western blot

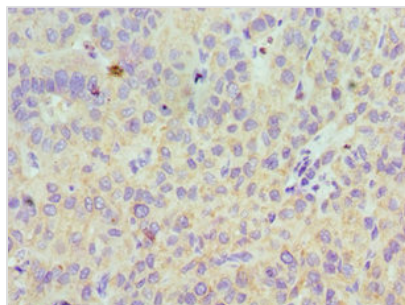
All lanes: Lymphatic vessel endothelial hyaluronic acid receptor 1 antibody at 8µg/ml + Mouse liver tissue

Secondary

Goat polyclonal to rabbit IgG at 1/10000 dilution

Predicted band size: 35 kDa

Observed band size: 35 kDa



Immunohistochemistry of paraffin-embedded human liver cancer using CSB-PA897574ESR1HU at dilution of 1:100

Usage

For Research Use Only. Not for use in diagnostic or therapeutic procedures.