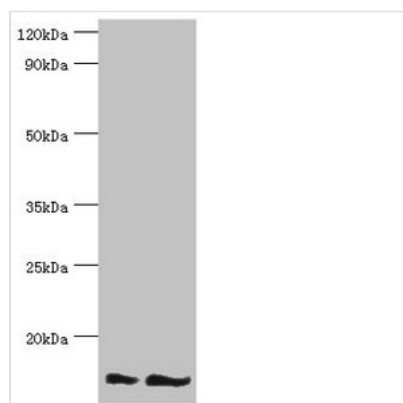




NEDD8 Antibody

Product Code	CSB-PA618018ESR1HU
Storage	Upon receipt, store at -20°C or -80°C. Avoid repeated freeze.
Uniprot No.	Q15843
Immunogen	Recombinant Human NEDD8 protein (1-81AA)
Raised In	Rabbit
Species Reactivity	Human, Mouse
Tested Applications	ELISA, WB, IHC, IF; Recommended dilution: WB:1:500-1:2000, IHC:1:20-1:200, IF:1:50-1:200
Form	Liquid
Conjugate	Non-conjugated
Storage Buffer	PBS with 0.02% sodium azide, 50% glycerol, pH7.3.
Purification Method	Antigen Affinity Purified
Isotype	IgG
Clonality	Polyclonal
Alias	NEDD8 (Neddylin) (Neural precursor cell expressed developmentally down-regulated protein 8) (NEDD-8) (Ubiquitin-like protein Nedd8), NEDD8
Immunogen Species	Homo sapiens (Human)
Research Area	Cell Biology
Target Names	NEDD8

Image



Western blot

All lanes: NEDD8 antibody at 16µg/ml

Lane 1: Mouse heart tissue

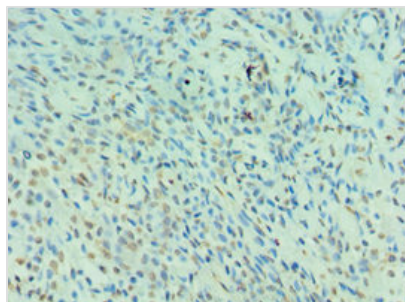
Lane 2: Mouse spleen tissue

Secondary

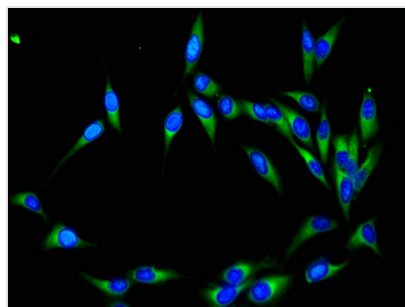
Goat polyclonal to rabbit IgG at 1/10000 dilution

Predicted band size: 9 kDa

Observed band size: 9 kDa



Immunohistochemistry of paraffin-embedded human breast cancer using CSB-PA618018ESR1HU at dilution of 1:100



Immunofluorescent analysis of HeLa cells using CSB-PA618018ESR1HU at dilution of 1:100 and Alexa Fluor 488-conjugated AffiniPure Goat Anti-Rabbit IgG(H+L)

Usage

For Research Use Only. Not for use in diagnostic or therapeutic procedures.