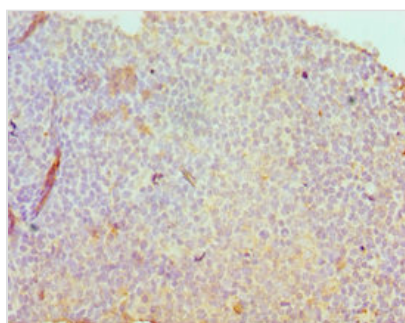




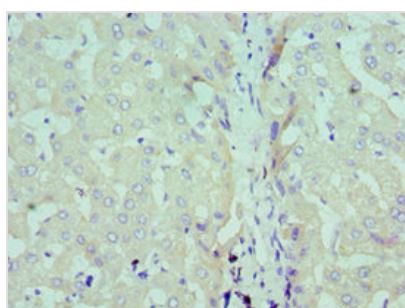
SDC1 Antibody

Product Code	CSB-PA020888ESR2HU
Storage	Upon receipt, store at -20°C or -80°C. Avoid repeated freeze.
Uniprot No.	P18827
Immunogen	Recombinant Human Syndecan-1 protein (25-240AA)
Raised In	Rabbit
Species Reactivity	Human
Tested Applications	ELISA, IHC; Recommended dilution: IHC:1:20-1:200
Form	Liquid
Conjugate	Non-conjugated
Storage Buffer	PBS with 0.02% sodium azide, 50% glycerol, pH7.3.
Purification Method	Antigen Affinity Purified
Isotype	IgG
Clonality	Polyclonal
Alias	Syndecan-1 (SYND1) (CD antigen CD138), SDC1, SDC
Immunogen Species	Homo sapiens (Human)
Research Area	Neuroscience
Target Names	SDC1

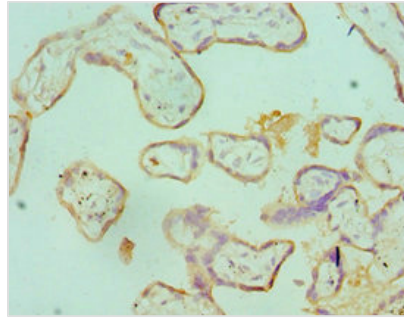
Image



Immunohistochemistry of paraffin-embedded human tonsil tissue using CSB-PA020888ESR2HU at dilution of 1:100



Immunohistochemistry of paraffin-embedded human liver tissue using CSB-PA020888ESR2HU at dilution of 1:100



Immunohistochemistry of paraffin-embedded human placenta tissue using CSB-PA020888ESR2HU at dilution of 1:100

Usage

For Research Use Only. Not for use in diagnostic or therapeutic procedures.