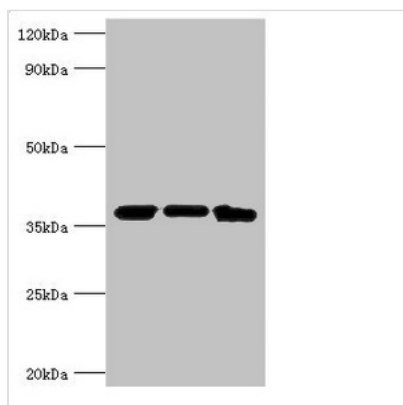




MDH2 Antibody

Product Code	CSB-PA013623ESR2HU
Storage	Upon receipt, store at -20°C or -80°C. Avoid repeated freeze.
Uniprot No.	P40926
Immunogen	Recombinant Human Malate dehydrogenase, mitochondrial protein (59-338AA)
Raised In	Rabbit
Species Reactivity	Human, Mouse
Tested Applications	ELISA, WB; Recommended dilution: WB:1:500-1:5000
Form	Liquid
Conjugate	Non-conjugated
Storage Buffer	PBS with 0.02% sodium azide, 50% glycerol, pH7.3.
Purification Method	Antigen Affinity Purified
Isotype	IgG
Clonality	Polyclonal
Alias	Malate dehydrogenase, mitochondrial (EC 1.1.1.37), MDH2
Immunogen Species	Homo sapiens (Human)
Research Area	Tags & Cell Markers
Target Names	MDH2

Image



Western blot

All lanes: MDH2 antibody at 4µg/ml

Lane 1: Mouse lung tissue

Lane 2: 293T whole cell lysate

Lane 3: K562 whole cell lysate

Secondary

Goat polyclonal to rabbit IgG at 1/10000 dilution

Predicted band size: 36, 31 kDa

Observed band size: 36 kDa

Usage

For Research Use Only. Not for use in diagnostic or therapeutic procedures.