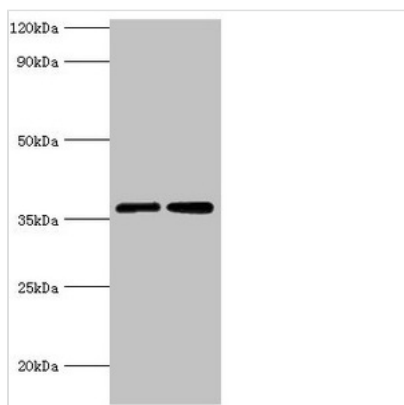




MDH2 Antibody

| | |
|----------------------------|--|
| Product Code | CSB-PA013623ESR1HU |
| Storage | Upon receipt, store at -20°C or -80°C. Avoid repeated freeze. |
| Uniprot No. | P40926 |
| Immunogen | Recombinant Human Malate dehydrogenase, mitochondrial protein (59-338AA) |
| Raised In | Rabbit |
| Species Reactivity | Human |
| Tested Applications | ELISA, WB, IHC; Recommended dilution: WB:1:500-1:2000, IHC:1:20-1:200 |
| Form | Liquid |
| Conjugate | Non-conjugated |
| Storage Buffer | PBS with 0.02% sodium azide, 50% glycerol, pH7.3. |
| Purification Method | Antigen Affinity Purified |
| Isotype | IgG |
| Clonality | Polyclonal |
| Alias | Malate dehydrogenase, mitochondrial (EC 1.1.1.37), MDH2 |
| Immunogen Species | Homo sapiens (Human) |
| Research Area | Tags & Cell Markers |
| Target Names | MDH2 |

Image



Western blot

All lanes: MDH2 antibody at 3µg/ml

Lane 1: 293T whole cell lysate

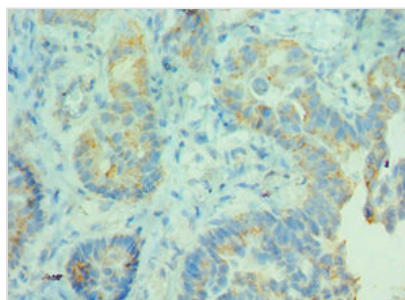
Lane 2: K562 whole cell lysate

Secondary

Goat polyclonal to rabbit IgG at 1/10000 dilution

Predicted band size: 36, 31 kDa

Observed band size: 36 kDa



Immunohistochemistry of paraffin-embedded

human lung cancer using CSB-

PA013623ESR1HU at dilution of 1:100



Usage

For Research Use Only. Not for use in diagnostic or therapeutic procedures.