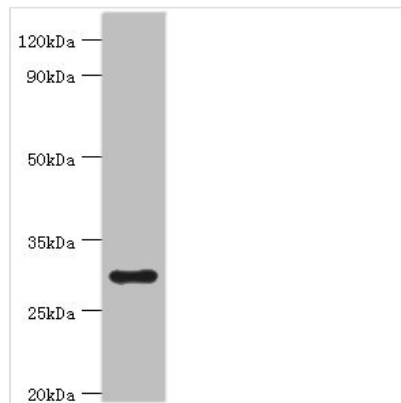




MRPL28 Antibody

Product Code	CSB-PA621647ESR1HU
Storage	Upon receipt, store at -20°C or -80°C. Avoid repeated freeze.
Uniprot No.	Q13084
Immunogen	Recombinant Human 39S ribosomal protein L28, mitochondrial protein (1-256AA)
Raised In	Rabbit
Species Reactivity	Human
Tested Applications	ELISA, WB, IHC, IF; Recommended dilution: WB:1:500-1:5000, IHC:1:20-1:200, IF:1:50-1:200
Form	Liquid
Conjugate	Non-conjugated
Storage Buffer	PBS with 0.02% sodium azide, 50% glycerol, pH7.3.
Purification Method	Antigen Affinity Purified
Isotype	IgG
Clonality	Polyclonal
Alias	39S ribosomal protein L28, mitochondrial (L28mt) (MRP-L28) (Melanoma antigen p15) (Melanoma-associated antigen recognized by T-lymphocytes) (Mitochondrial large ribosomal subunit protein bL28m), MRPL28, MAAT1
Immunogen Species	Homo sapiens (Human)
Research Area	Epigenetics and Nuclear Signaling
Target Names	MRPL28

Image



Western blot

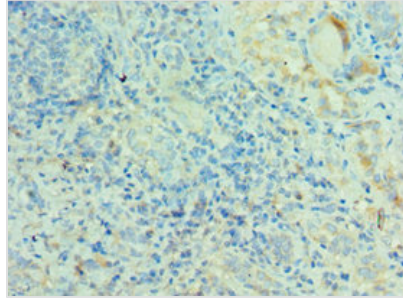
All lanes: 39S ribosomal protein L28, mitochondrial antibody at 2µg/ml + HeLa whole cell lysate

Secondary

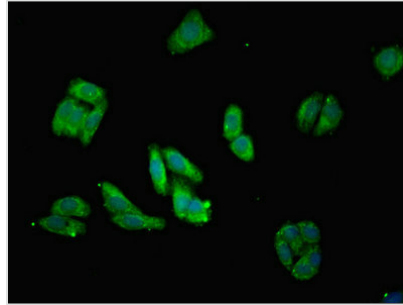
Goat polyclonal to rabbit IgG at 1/10000 dilution

Predicted band size: 30 kDa

Observed band size: 30 kDa



Immunohistochemistry of paraffin-embedded human kidney tissue using CSB-PA621647ESR1HU at dilution of 1:100



Immunofluorescent analysis of HepG2 cells using CSB-PA621647ESR1HU at dilution of 1:100 and Alexa Fluor 488-conjugated AffiniPure Goat Anti-Rabbit IgG(H+L)

Usage

For Research Use Only. Not for use in diagnostic or therapeutic procedures.