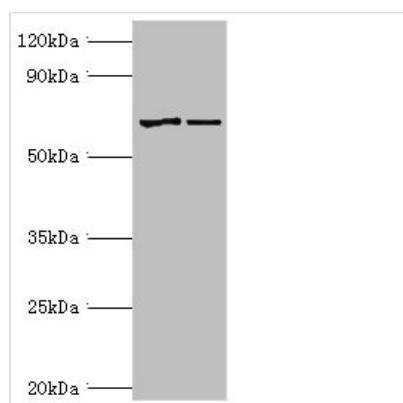




# MTM1 Antibody

|                            |  |
|----------------------------|--|
| <b>Product Code</b>        | CSB-PA614418ESR1HU   |
| <b>Storage</b>             | Upon receipt, store at -20°C or -80°C. Avoid repeated freeze.  |
| <b>Uniprot No.</b>         | Q13496   |
| <b>Immunogen</b>           | Recombinant Human Myotubularin protein (484-603AA)   |
| <b>Raised In</b>           | Rabbit   |
| <b>Species Reactivity</b>  | Human  |
| <b>Tested Applications</b> | ELISA, WB, IHC; Recommended dilution: WB:1:200-1:1000, IHC:1:20-1:200  |
| <b>Form</b>                | Liquid   |
| <b>Conjugate</b>           | Non-conjugated   |
| <b>Storage Buffer</b>      | PBS with 0.02% sodium azide, 50% glycerol, pH7.3.  |
| <b>Purification Method</b> | Antigen Affinity Purified  |
| <b>Isotype</b>             | IgG  |
| <b>Clonality</b>           | Polyclonal   |
| <b>Alias</b>               | Myotubularin (Phosphatidylinositol-3,5-bisphosphate 3-phosphatase) (EC 3.1.3.95) (Phosphatidylinositol-3-phosphate phosphatase) (EC 3.1.3.64), MTM1, CG2 |
| <b>Immunogen Species</b>   | Homo sapiens (Human)   |
| <b>Research Area</b>       | Signal Transduction  |
| <b>Target Names</b>        | MTM1   |

## Image



### Western blot

All lanes: Myotubularin antibody at 2µg/ml

Lane 1: Jurkat whole cell lysate

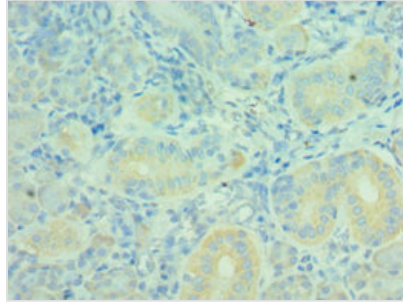
Lane 2: HepG2 whole cell lysate

Secondary

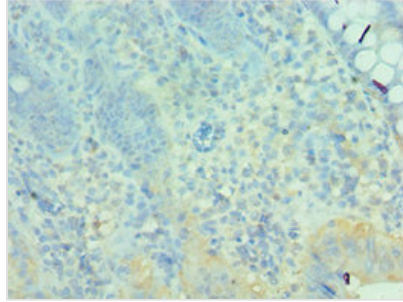
Goat polyclonal to rabbit IgG at 1/10000 dilution

Predicted band size: 70, 67 kDa

Observed band size: 70 kDa



Immunohistochemistry of paraffin-embedded human pancreatic tissue using CSB-PA614418ESR1HU at dilution of 1:100



Immunohistochemistry of paraffin-embedded human epityphlon tissue using CSB-PA614418ESR1HU at dilution of 1:100

## Usage

For Research Use Only. Not for use in diagnostic or therapeutic procedures.