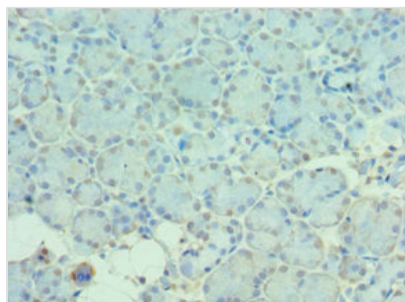




MTM1 Antibody

Product Code	CSB-PA614418ESR2HU
Storage	Upon receipt, store at -20°C or -80°C. Avoid repeated freeze.
Uniprot No.	Q13496
Immunogen	Recombinant Human Myotubularin protein (484-603AA)
Raised In	Rabbit
Species Reactivity	Human
Tested Applications	ELISA, IHC; Recommended dilution: IHC:1:20-1:200
Form	Liquid
Conjugate	Non-conjugated
Storage Buffer	PBS with 0.02% sodium azide, 50% glycerol, pH7.3.
Purification Method	Antigen Affinity Purified
Isotype	IgG
Clonality	Polyclonal
Alias	Myotubularin (Phosphatidylinositol-3,5-bisphosphate 3-phosphatase) (EC 3.1.3.95) (Phosphatidylinositol-3-phosphate phosphatase) (EC 3.1.3.64), MTM1, CG2
Immunogen Species	Homo sapiens (Human)
Research Area	Signal Transduction
Target Names	MTM1

Image



Immunohistochemistry of paraffin-embedded human pancreatic tissue using CSB-PA614418ESR2HU at dilution of 1:100

Usage

For Research Use Only. Not for use in diagnostic or therapeutic procedures.