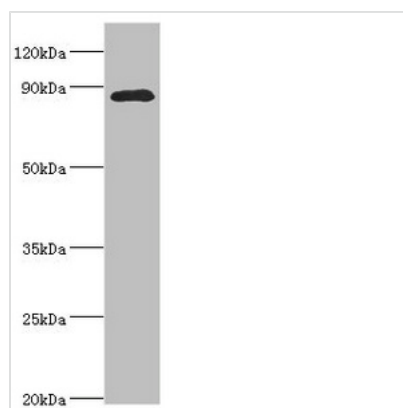




CDC5L Antibody

Product Code	CSB-PA858712ESR1HU
Storage	Upon receipt, store at -20°C or -80°C. Avoid repeated freeze.
Uniprot No.	Q99459
Immunogen	Recombinant Human Cell division cycle 5-like protein (563-802AA)
Raised In	Rabbit
Species Reactivity	Human, Mouse
Tested Applications	ELISA, WB; Recommended dilution: WB:1:500-1:5000
Form	Liquid
Conjugate	Non-conjugated
Storage Buffer	PBS with 0.02% sodium azide, 50% glycerol, pH7.3.
Purification Method	Antigen Affinity Purified
Isotype	IgG
Clonality	Polyclonal
Alias	Cell division cycle 5-like protein (Cdc5-like protein) (Pombe cdc5-related protein), CDC5L, KIAA0432 PCDC5RP
Immunogen Species	Homo sapiens (Human)
Research Area	Epigenetics and Nuclear Signaling
Target Names	CDC5L

Image



Western blot

All lanes: Cell division cycle 5-like protein antibody at 4µg/ml + Mouse brain tissue

Secondary

Goat polyclonal to rabbit IgG at 1/10000 dilution

Predicted band size: 90 kDa

Observed band size: 90 kDa

Usage

For Research Use Only. Not for use in diagnostic or therapeutic procedures.