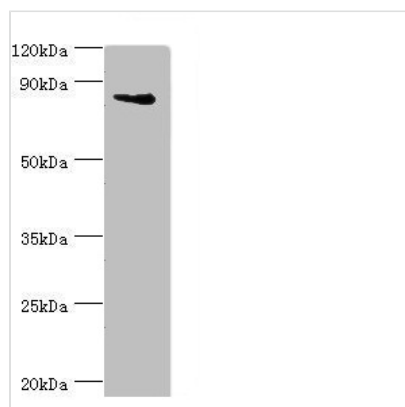




ILF3 Antibody

Product Code	CSB-PA613273ESR1HU
Storage	Upon receipt, store at -20°C or -80°C. Avoid repeated freeze.
Uniprot No.	Q12906
Immunogen	Recombinant Human Interleukin enhancer-binding factor 3 protein (785-894AA)
Raised In	Rabbit
Species Reactivity	Human
Tested Applications	ELISA, WB, IHC; Recommended dilution: WB:1:200-1:1000, IHC:1:20-1:200
Form	Liquid
Conjugate	Non-conjugated
Storage Buffer	PBS with 0.02% sodium azide, 50% glycerol, pH7.3.
Purification Method	Antigen Affinity Purified
Isotype	IgG
Clonality	Polyclonal
Alias	Interleukin enhancer-binding factor 3 (Double-stranded RNA-binding protein 76) (DRBP76) (M-phase phosphoprotein 4) (MPP4) (Nuclear factor associated with dsRNA) (NFAR) (Nuclear factor of activated T-cells 90 kDa) (NF-AT-90) (Translational control protein 80) (TCP80), ILF3, DRBF MPHOSPH4 NF90
Immunogen Species	Homo sapiens (Human)
Research Area	Signal Transduction
Target Names	ILF3

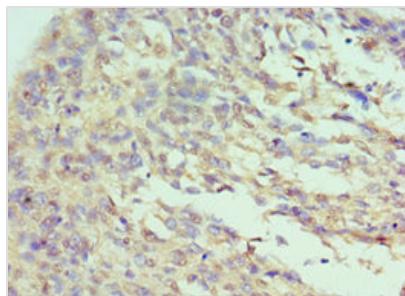
Image



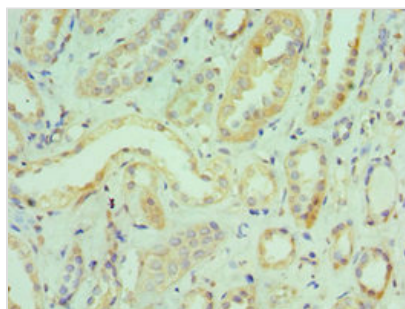
Western blot

All lanes: Interleukin enhancer-binding factor 3 antibody at 3μg/ml + HepG2 whole cell lysate
Secondary

Goat polyclonal to rabbit IgG at 1/10000 dilution
Predicted band size: 96, 77, 83, 76, 75 kDa
Observed band size: 96 kDa



Immunohistochemistry of paraffin-embedded human cervical cancer using CSB-PA613273ESR1HU at dilution of 1:100



Immunohistochemistry of paraffin-embedded human kidney tissue using CSB-PA613273ESR1HU at dilution of 1:100