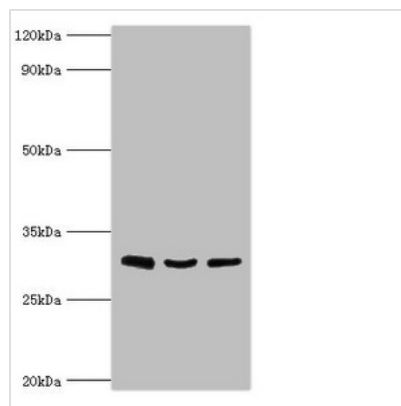




# KITLG Antibody

<b>Product Code</b>	CSB-PA012376ESR2HU
<b>Storage</b>	Upon receipt, store at -20°C or -80°C. Avoid repeated freeze.
<b>Uniprot No.</b>	P21583
<b>Immunogen</b>	Recombinant Human Kit ligand protein (26-214AA)
<b>Raised In</b>	Rabbit
<b>Species Reactivity</b>	Human
<b>Tested Applications</b>	ELISA, WB; Recommended dilution: WB:1:500-1:2000
<b>Form</b>	Liquid
<b>Conjugate</b>	Non-conjugated
<b>Storage Buffer</b>	PBS with 0.02% sodium azide, 50% glycerol, pH7.3.
<b>Purification Method</b>	Antigen Affinity Purified
<b>Isotype</b>	IgG
<b>Clonality</b>	Polyclonal
<b>Alias</b>	Kit ligand (Mast cell growth factor) (MGF) (Stem cell factor) (SCF) (c-Kit ligand) [Cleaved into: Soluble KIT ligand (sKITLG)], KITLG, MGF SCF
<b>Immunogen Species</b>	Homo sapiens (Human)
<b>Research Area</b>	Immunology
<b>Target Names</b>	KITLG

## Image



### Western blot

All lanes: Kit ligand antibody at 4µg/ml

Lane 1: HepG2 whole cell lysate

Lane 2: Jurkat whole cell lysate

Lane 3: Hela whole cell lysate

Secondary

Goat polyclonal to rabbit IgG at 1/10000 dilution

Predicted band size: 31, 28, 27 kDa

Observed band size: 31 kDa

## Usage

For Research Use Only. Not for use in diagnostic or therapeutic procedures.