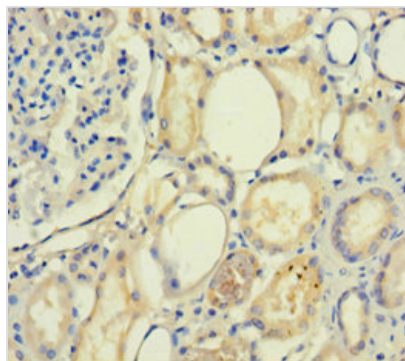




PLA2R1 Antibody

Product Code	CSB-PA623780LA01HU
Storage	Upon receipt, store at -20°C or -80°C. Avoid repeated freeze.
Uniprot No.	Q13018
Immunogen	Recombinant Human Secretory phospholipase A2 receptor protein (395-530AA)
Raised In	Rabbit
Species Reactivity	Human
Tested Applications	ELISA, IHC; Recommended dilution: IHC:1:20-1:200
Form	Liquid
Conjugate	Non-conjugated
Storage Buffer	Preservative: 0.03% Proclin 300 Constituents: 50% Glycerol, 0.01M PBS, PH 7.4
Purification Method	>95%, Protein G purified
Isotype	IgG
Clonality	Polyclonal
Alias	Secretory phospholipase A2 receptor (PLA2-R) (PLA2R) (180 kDa secretory phospholipase A2 receptor) (C-type lectin domain family 13 member C) (M-type receptor) [Cleaved into: Soluble secretory phospholipase A2 receptor (Soluble PLA2-R) (Soluble PLA2R)], PLA2R1, CLEC13C
Immunogen Species	Homo sapiens (Human)
Research Area	Cardiovascular
Target Names	PLA2R1

Image



Immunohistochemistry of paraffin-embedded human kidney tissue using CSB-PA623780LA01HU at dilution of 1:100

Usage

For Research Use Only. Not for use in diagnostic or therapeutic procedures.