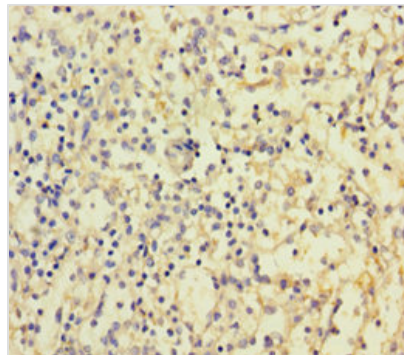




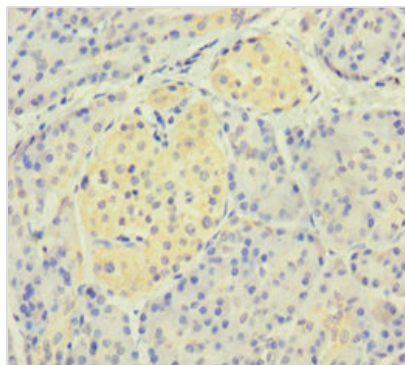
CD300LF Antibody

Product Code	CSB-PA819470LA01HU
Storage	Upon receipt, store at -20°C or -80°C. Avoid repeated freeze.
Uniprot No.	Q8TDQ1
Immunogen	Recombinant Human CMRF35-like molecule 1 protein (20-156AA)
Raised In	Rabbit
Species Reactivity	Human
Tested Applications	ELISA, IHC; Recommended dilution: IHC:1:20-1:200
Form	Liquid
Conjugate	Non-conjugated
Storage Buffer	Preservative: 0.03% Proclin 300 Constituents: 50% Glycerol, 0.01M PBS, PH 7.4
Purification Method	>95%, Protein G purified
Isotype	IgG
Clonality	Polyclonal
Alias	CMRF35-like molecule 1 (CLM-1) (CD300 antigen-like family member F) (Immune receptor expressed on myeloid cells 1) (IREM-1) (Immunoglobulin superfamily member 13) (IgSF13) (NK inhibitory receptor) (CD antigen CD300f), CD300LF, CD300F CLM1 IGSF13 IREM1 NKIR
Immunogen Species	Homo sapiens (Human)
Research Area	Immunology
Target Names	CD300LF

Image



Immunohistochemistry of paraffin-embedded human spleen tissue using CSB-PA819470LA01HU at dilution of 1:100



Immunohistochemistry of paraffin-embedded human pancreatic tissue using CSB-PA819470LA01HU at dilution of 1:100

Usage

For Research Use Only. Not for use in diagnostic or therapeutic procedures.