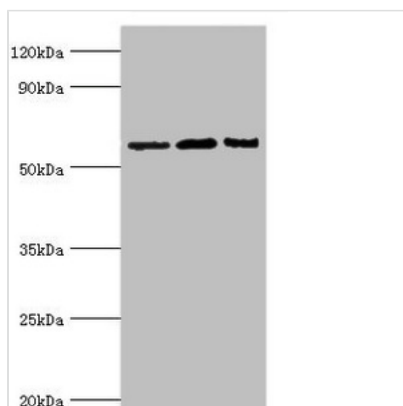




IL10RA Antibody

Product Code	CSB-PA621688ESR2HU
Storage	Upon receipt, store at -20°C or -80°C. Avoid repeated freeze.
Uniprot No.	Q13651
Immunogen	Recombinant Human Interleukin-10 receptor subunit alpha protein (22-230AA)
Raised In	Rabbit
Species Reactivity	Human, Mouse
Tested Applications	ELISA, WB, IHC; Recommended dilution: WB:1:200-1:1000, IHC:1:20-1:200
Form	Liquid
Conjugate	Non-conjugated
Storage Buffer	PBS with 0.02% sodium azide, 50% glycerol, pH7.3.
Purification Method	Antigen Affinity Purified
Isotype	IgG
Clonality	Polyclonal
Alias	Interleukin-10 receptor subunit alpha (IL-10 receptor subunit alpha) (IL-10R subunit alpha) (IL-10RA) (CDw210a) (Interleukin-10 receptor subunit 1) (IL-10R subunit 1) (IL-10R1) (CD antigen CD210), IL10RA, IL10R
Immunogen Species	Homo sapiens (Human)
Research Area	Immunology
Target Names	IL10RA

Image



Western blot

All lanes: Interleukin-10 receptor subunit alpha antibody at 8µg/ml

Lane 1: Mouse heart tissue

Lane 2: Hela whole cell lysate

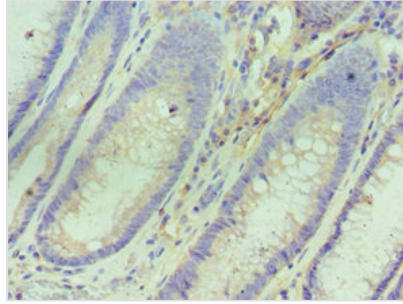
Lane 3: Mouse liver tissue

Secondary

Goat polyclonal to rabbit IgG at 1/10000 dilution

Predicted band size: 63 kDa

Observed band size: 63 kDa



Immunohistochemistry of paraffin-embedded human colon cancer using CSB-PA621688ESR2HU at dilution of 1:100

Usage

For Research Use Only. Not for use in diagnostic or therapeutic procedures.