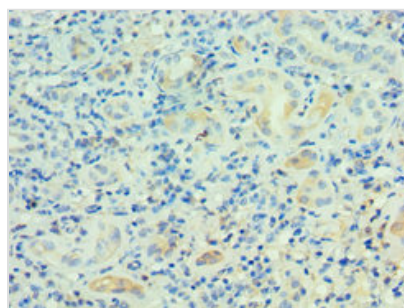




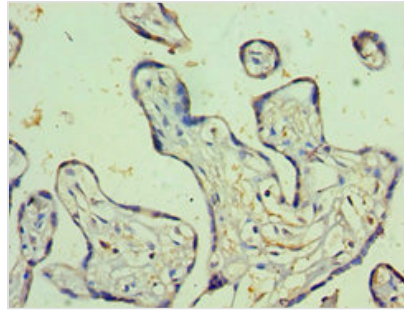
# PSG1 Antibody

<b>Product Code</b>	CSB-PA018849ESR1HU
<b>Storage</b>	Upon receipt, store at -20°C or -80°C. Avoid repeated freeze.
<b>Uniprot No.</b>	P11464
<b>Immunogen</b>	Recombinant Human Pregnancy-specific beta-1-glycoprotein 1 protein (180-419AA)
<b>Raised In</b>	Rabbit
<b>Species Reactivity</b>	Human
<b>Tested Applications</b>	ELISA, IHC, IP; Recommended dilution: IHC:1:20-1:200, IP:1:200-1:2000
<b>Form</b>	Liquid
<b>Conjugate</b>	Non-conjugated
<b>Storage Buffer</b>	PBS with 0.02% sodium azide, 50% glycerol, pH7.3.
<b>Purification Method</b>	Antigen Affinity Purified
<b>Isotype</b>	IgG
<b>Clonality</b>	Polyclonal
<b>Alias</b>	Pregnancy-specific beta-1-glycoprotein 1 (PS-beta-G-1) (PSBG-1) (Pregnancy-specific glycoprotein 1) (CD66 antigen-like family member F) (Fetal liver non-specific cross-reactive antigen 1/2) (FL-NCA-1/2) (PSG95) (Pregnancy-specific beta-1 glycoprotein C/D) (PS-beta-C/D) (CD antigen CD66f), PSG1, B1G1 PSBG1 PSGGA
<b>Immunogen Species</b>	Homo sapiens (Human)
<b>Research Area</b>	Tags & Cell Markers
<b>Target Names</b>	PSG1

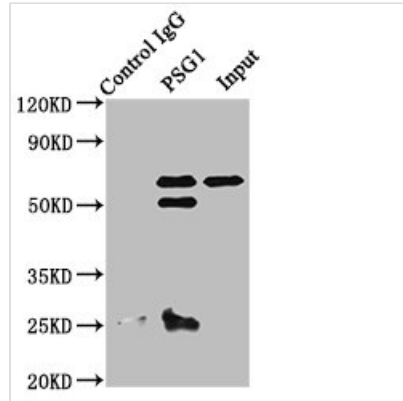
## Image



Immunohistochemistry of paraffin-embedded human kidney tissue using CSB-PA018849ESR1HU at dilution of 1:100



Immunohistochemistry of paraffin-embedded human placenta tissue using CSB-PA018849ESR1HU at dilution of 1:100



Immunoprecipitating PSG1 in A549 whole cell lysate

Lane 1: Rabbit control IgG instead of CSB-PA018849ESR1HU in A549 whole cell lysate.

For western blotting, a HRP-conjugated Protein G antibody was used as the secondary antibody (1/2000)

Lane 2: CSB-PA018849ESR1HU (8 $\mu$ g) + A549 whole cell lysate (500 $\mu$ g)

Lane 3: A549 whole cell lysate (10 $\mu$ g)

## Usage

For Research Use Only. Not for use in diagnostic or therapeutic procedures.