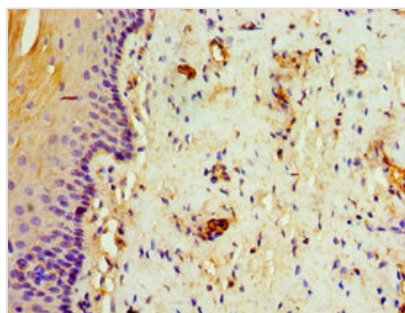




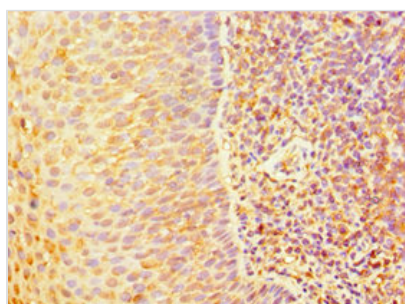
# TAP1 Antibody

<b>Product Code</b>	CSB-PA023120ESR1HU
<b>Storage</b>	Upon receipt, store at -20°C or -80°C. Avoid repeated freeze.
<b>Uniprot No.</b>	Q03518
<b>Immunogen</b>	Recombinant Human Antigen peptide transporter 1 protein (524-808AA)
<b>Raised In</b>	Rabbit
<b>Species Reactivity</b>	Human
<b>Tested Applications</b>	ELISA, IHC; Recommended dilution: IHC:1:20-1:200
<b>Form</b>	Liquid
<b>Conjugate</b>	Non-conjugated
<b>Storage Buffer</b>	PBS with 0.02% sodium azide, 50% glycerol, pH7.3.
<b>Purification Method</b>	Antigen Affinity Purified
<b>Isotype</b>	IgG
<b>Clonality</b>	Polyclonal
<b>Alias</b>	Antigen peptide transporter 1 (APT1) (ATP-binding cassette sub-family B member 2) (Peptide supply factor 1) (Peptide transporter PSF1) (PSF-1) (Peptide transporter TAP1) (Peptide transporter involved in antigen processing 1) (Really interesting new gene 4 protein), TAP1, ABCB2 PSF1 RING4 Y3
<b>Immunogen Species</b>	Homo sapiens (Human)
<b>Research Area</b>	Signal Transduction
<b>Target Names</b>	TAP1

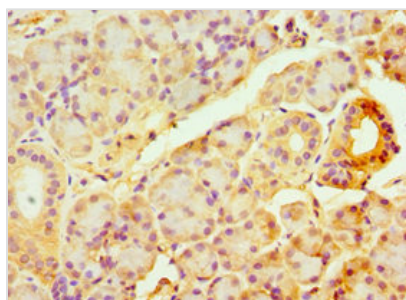
## Image



Immunohistochemistry of paraffin-embedded human cervical cancer using CSB-PA023120ESR1HU at dilution of 1:100



Immunohistochemistry of paraffin-embedded human tonsil tissue using CSB-PA023120ESR1HU at dilution of 1:100



Immunohistochemistry of paraffin-embedded human pancreatic tissue using CSB-PA023120ESR1HU at dilution of 1:100

---

**Usage**

For Research Use Only. Not for use in diagnostic or therapeutic procedures.