

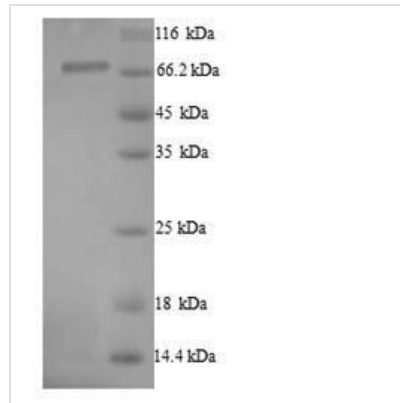


Recombinant Human Protein-arginine deiminase type-1 (PADI1)

| | |
|--------------------------|--|
| Product Code | CSB-YP891543HU |
| Relevance | Catalyzes the deimination of arginine residues of proteins. |
| Abbreviation | Recombinant Human PADI1 protein |
| Storage | The shelf life is related to many factors, storage state, buffer ingredients, storage temperature and the stability of the protein itself. Generally, the shelf life of liquid form is 6 months at -20°C/-80°C. The shelf life of lyophilized form is 12 months at -20°C/-80°C. |
| Uniprot No. | Q9ULC6 |
| Alias | Peptidylarginine deiminase I Protein-arginine deiminase type I |
| Product Type | Recombinant Protein |
| Immunogen Species | Homo sapiens (Human) |
| Purity | ≥ 90% as determined by SDS-PAGE. |
| Sequence | MAPKRVVQLSLKMPHVAVCVVGVEAHVVDIHSVDPKGANSFRVSGSSGVEVFM VYNRTRVKEPIGKARWPLDADMMVSVGTASKELKDFKVRVSYFGEQEDQA LGRSVLYLTGVDISLEVDTGRTGKVKRSQGDKKTWRWGPEGYGAILLVNCDR DNHRSAEPDLTHSWLMSLADLQDMSPMLLSCNGPDKLFDHSHKLVLPFSDS KRVRVFCARGGNSLSYKQVLGPQCLSYEVERQPGEQEIKFYVEGLTFPDAD FLGLVSLSVSLVDPGTLPEVTLFTDVTGFRMAPWIMTPNTQPPEELYVCRVMD THGSNEKFLEDMSYLTLKANCKLTICPQVENRNDRWIQDEMEFGYIEAPHSF PVVFDSPRNRGLKDFPYKRILGPDFGYVTREIPLPGPSSLDSFGNLDVSPVTV GGTEYPLGRILIGSSFPKSGGRQMARAVRNFLKAQQVQAPVELYSDWLSVGH VDEFLTVPVPTSDQKGFRLLLASPSACKLKFQEKKEEGYGEAAQFDGLKHQAKR SINEMADRHLQRDNLHAQKCIDWNRNVLKRELGLAESDIVDIPQLFFLKNFYA EAFFPDMVMNVVLGKYLGIKPYGPIINGRCCLEEKVQSLLEPLGLHCIFIDDYL SYHELQGEIHCGTNVRRKPFPPFKWWNMVP |
| Research Area | Epigenetics and Nuclear Signaling |
| Source | Yeast |
| Target Names | PADI1 |
| Protein Names | Recommended name: Protein-arginine deiminase type-1 EC= 3.5.3.15 Alternative name(s): Peptidylarginine deiminase I Protein-arginine deiminase type I |
| Expression Region | 1-663aa |
| Notes | Repeated freezing and thawing is not recommended. Store working aliquots at 4°C for up to one week. |
| Tag Info | N-terminal 6xHis-tagged |
| Mol. Weight | 76.7kDa |

**Protein Length**

Full Length

Image

(Tris-Glycine gel) Discontinuous SDS-PAGE (reduced) with 5% enrichment gel and 15% separation gel.

Reconstitution

We recommend that this vial be briefly centrifuged prior to opening to bring the contents to the bottom. Please reconstitute protein in deionized sterile water to a concentration of 0.1-1.0 mg/mL. We recommend to add 5-50% of glycerol (final concentration) and aliquot for long-term storage at -20°C/-80°C. Our default final concentration of glycerol is 50%. Customers could use it as reference.

Shelf Life

The shelf life is related to many factors, storage state, buffer ingredients, storage temperature and the stability of the protein itself. Generally, the shelf life of liquid form is 6 months at -20°C/-80°C. The shelf life of lyophilized form is 12 months at -20°C/-80°C.