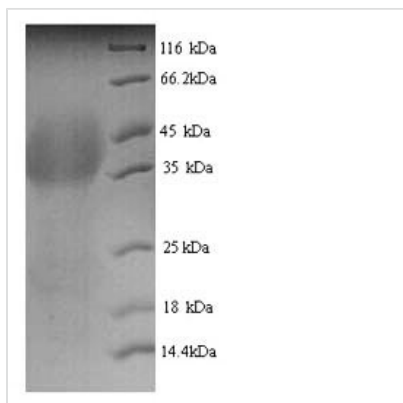




Recombinant Human Lutropin-choriogonadotropic hormone receptor (LHCGR), partial

Product Code	CSB-YP012911HU
Relevance	Receptor for lutropin-choriogonadotropic hormone. The activity of this receptor is mediated by G proteins which activate adenylate cyclase.
Abbreviation	Recombinant Human LHCGR protein, partial
Storage	The shelf life is related to many factors, storage state, buffer ingredients, storage temperature and the stability of the protein itself. Generally, the shelf life of liquid form is 6 months at -20°C/-80°C. The shelf life of lyophilized form is 12 months at -20°C/-80°C.
Uniprot No.	P22888
Alias	Luteinizing hormone receptor ;LHR ;LSH-R
Product Type	Recombinant Protein
Immunogen Species	Homo sapiens (Human)
Purity	≥ 90% as determined by SDS-PAGE.
Sequence	EALCPEPCNCVDPGALRCPGPTAGLTRLRLSLAYLPVKVIPSQAFRGLNEVIKIEIS QIDSLERIEANAFDNLNLSEILIQNTKNLRYIEPGAFINLPRLLKYLSICNTGIRKFP DVTKVFSSSESNFILEICDNLHITTIPGNAFQGMNNE SVTLKLYGNGFEEVQSHA FNGTTLTSLELKENVHLEKMHNGAFRGATGPKTLDISSTKLQALPSYGLESIQR LIATSSYSLKKLPSRETFVNLEATLTYPSHCCAFRNLPKEQNFSSHSISENFSK QCESTVRKVNKTLTYSSMLAESEL SGWDY EYGFCLPKTPRCAPEPDAFNPCE DIMGYDFLR
Research Area	Neuroscience
Source	Yeast
Target Names	LHCGR
Protein Names	Recommended name: Lutropin-choriogonadotropic hormone receptor Short name= LH/CG-R Alternative name(s): Luteinizing hormone receptor Short name= LHR Short name= LSH-R
Expression Region	27-363aa
Notes	Repeated freezing and thawing is not recommended. Store working aliquots at 4°C for up to one week.
Tag Info	N-terminal 6xHis-tagged
Mol. Weight	39.6kDa
Protein Length	Partial
Image	



(Tris-Glycine gel) Discontinuous SDS-PAGE (reduced) with 5% enrichment gel and 15% separation gel.

Reconstitution

We recommend that this vial be briefly centrifuged prior to opening to bring the contents to the bottom. Please reconstitute protein in deionized sterile water to a concentration of 0.1-1.0 mg/mL. We recommend to add 5-50% of glycerol (final concentration) and aliquot for long-term storage at $-20^{\circ}\text{C}/-80^{\circ}\text{C}$. Our default final concentration of glycerol is 50%. Customers could use it as reference.

Shelf Life

The shelf life is related to many factors, storage state, buffer ingredients, storage temperature and the stability of the protein itself. Generally, the shelf life of liquid form is 6 months at $-20^{\circ}\text{C}/-80^{\circ}\text{C}$. The shelf life of lyophilized form is 12 months at $-20^{\circ}\text{C}/-80^{\circ}\text{C}$.