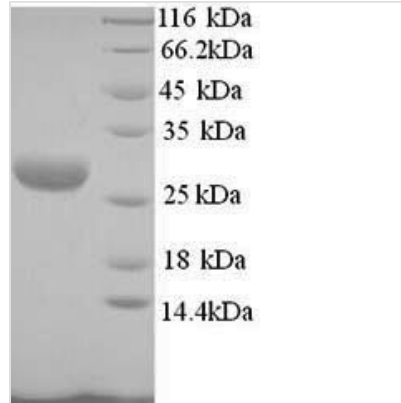




Recombinant Mannheimia haemolytica Leukotoxin (lktA), partial

Product Code	CSB-YP314743ESE
Relevance	Pasteurella leukotoxins are exotoxins that attack host leukocytes and especially polymorphonuclear cells, by causing cell rupture. The leukotoxin binds to the host LFA-1 integrin and induces a signaling cascade leading to many biological effects, including tyrosine phosphorylation of the CD18 tail, elevation of the intracellular Ca ²⁺ and lysis of the host cell . This leukotoxin is a major contributor to the pathogenesis of lung injury in ovine pneumonic pasteurellosis. It has also weak holytic activity.
Abbreviation	Recombinant Mannheimia haemolytica lktA protein, partial
Storage	The shelf life is related to many factors, storage state, buffer ingredients, storage temperature and the stability of the protein itself. Generally, the shelf life of liquid form is 6 months at -20°C/-80°C. The shelf life of lyophilized form is 12 months at -20°C/-80°C.
Uniprot No.	P0C085
Product Type	Recombinant Protein
Immunogen Species	Mannheimia haemolytica (Pasteurella haemolytica)
Purity	Greater than 90% as determined by SDS-PAGE.
Sequence	IGTSHNDIFKGSKFND AFN GGDGVD TIDGNDGNDRLFGGKGDDIIDGGNGDDF IDGGKGN D L L H G G K G D D I F V H R Q G D G N D S I T E S E G N D K L S F S D S N L K D L T F E K V N H H L V I T N T K Q E K V T I Q N W F R E A E F A K T I Q N Y V A T R D D K I E E I I G Q N G E R I T S K Q V D E L I E K G N G K I A Q S E L T K V V D N Y Q L L K Y S R D A S N S L D K L I S S A S A F T S S N D S R N V L A S P T S M L D P S L S S I Q F A R A A
Research Area	Others
Source	Yeast
Target Names	lktA
Protein Names	Recommended name: Leukotoxin Short name= Lkt
Expression Region	715-953aa
Notes	Repeated freezing and thawing is not recommended. Store working aliquots at 4°C for up to one week.
Tag Info	N-terminal 6xHis-tagged
Mol. Weight	28.0kDa
Protein Length	Partial
Image	



(Tris-Glycine gel) Discontinuous SDS-PAGE (reduced) with 5% enrichment gel and 15% separation gel.

Reconstitution

We recommend that this vial be briefly centrifuged prior to opening to bring the contents to the bottom. Please reconstitute protein in deionized sterile water to a concentration of 0.1-1.0 mg/mL. We recommend to add 5-50% of glycerol (final concentration) and aliquot for long-term storage at -20°C/-80°C. Our default final concentration of glycerol is 50%. Customers could use it as reference.

Shelf Life

The shelf life is related to many factors, storage state, buffer ingredients, storage temperature and the stability of the protein itself. Generally, the shelf life of liquid form is 6 months at -20°C/-80°C. The shelf life of lyophilized form is 12 months at -20°C/-80°C.