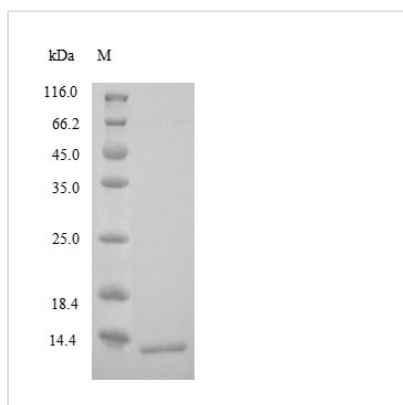




Recombinant Human Corticotropin-releasing factor receptor 1 (CRHR1), partial

Product Code	CSB-YP005965HU
Relevance	G-protein coupled receptor for CRH (corticotropin-releasing factor) and UCN (urocortin). Has high affinity for CRH and UCN. Ligand binding causes a conformation change that triggers signaling via guanine nucleotide-binding proteins (G proteins) and down-stream effectors, such as adenylate cyclase. Promotes the activation of adenylate cyclase, leading to increased intracellular cAMP levels. Inhibits the activity of the calcium channel CACNA1H. Required for normal bryonic development of the adrenal gland and for normal hormonal responses to stress. Plays a role in the response to anxiogenic stimuli.
Abbreviation	Recombinant Human CRHR1 protein, partial
Storage	The shelf life is related to many factors, storage state, buffer ingredients, storage temperature and the stability of the protein itself. Generally, the shelf life of liquid form is 6 months at -20°C/-80°C. The shelf life of lyophilized form is 12 months at -20°C/-80°C.
Uniprot No.	P34998
Alias	Corticotropin-releasing hormone receptor 1 ;CRH-R-1 ;CRH-R1
Product Type	Recombinant Protein
Immunogen Species	Homo sapiens (Human)
Purity	Greater than 90% as determined by SDS-PAGE.
Sequence	ASLQDQHCESLSLASNISGLQCNASVDLIGTCWPRSPAGQLVVRPCPAFFYGV RYNTTNGYRECLANGSWAARVNYSECQEILNEEKSKVHYHVAVI
Research Area	Neuroscience
Source	Yeast
Target Names	CRHR1
Protein Names	Recommended name: Corticotropin-releasing factor receptor 1 Short name= CRF-R-1 Short name= CRF-R1 Short name= CRFR-1 Alternative name(s): Corticotropin-releasing hormone receptor 1 Short name= CRH-R-1 Short name= CRH-R1
Expression Region	23-121aa
Notes	Repeated freezing and thawing is not recommended. Store working aliquots at 4°C for up to one week.
Tag Info	N-terminal 6xHis-tagged
Mol. Weight	13.0kDa
Protein Length	Partial
Image	



(Tris-Glycine gel) Discontinuous SDS-PAGE (reduced) with 5% enrichment gel and 15% separation gel.

Reconstitution

We recommend that this vial be briefly centrifuged prior to opening to bring the contents to the bottom. Please reconstitute protein in deionized sterile water to a concentration of 0.1-1.0 mg/mL. We recommend to add 5-50% of glycerol (final concentration) and aliquot for long-term storage at -20°C/-80°C. Our default final concentration of glycerol is 50%. Customers could use it as reference.

Shelf Life

The shelf life is related to many factors, storage state, buffer ingredients, storage temperature and the stability of the protein itself. Generally, the shelf life of liquid form is 6 months at -20°C/-80°C. The shelf life of lyophilized form is 12 months at -20°C/-80°C.