

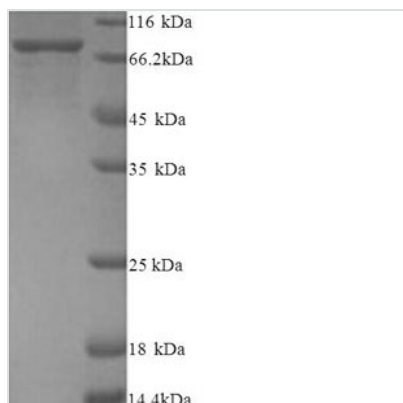


Recombinant Human Protein-arginine deiminase type-2 (PADI2)

Product Code	CSB-YP896493HU
Relevance	Catalyzes the deimination of arginine residues of proteins.
Abbreviation	Recombinant Human PADI2 protein
Storage	The shelf life is related to many factors, storage state, buffer ingredients, storage temperature and the stability of the protein itself. Generally, the shelf life of liquid form is 6 months at -20°C/-80°C. The shelf life of lyophilized form is 12 months at -20°C/-80°C.
Uniprot No.	Q9Y2J8
Alias	PAD-H19Peptidylarginine deiminase IIProtein-arginine deiminase type II
Product Type	Recombinant Protein
Immunogen Species	Homo sapiens (Human)
Purity	Greater than 90% as determined by SDS-PAGE.
Sequence	MLRERTVRLQYGSRVEAVYVLGTYLWTDVYSAAPAGAQTFSCLKHSEHVWVEV VRDGEAEEVATNGKQRWLLSPSTTLRVTMSQASTEASSDKVTVNYYDEEGSI PIDQAGLFLTAIEISLDVDADRDRGVVEKNNPKKASWTWGPPEGQGAILLVNCDR ETPWLPKEDCRDEKVYSKEDLKDMSQMILRTKGPDRLPAGYEIVLYISMSDSD KVGVFYVENPFFGQRYIHILGRRKLYHVVKYTGGSAELFFVEGLCFPDEGFS GLVSIHVSLLEYMAQDIPLTPIFTDTVIFRIAPWIMTPNILPPVSFVCCMKDNYL FLKEVKNLVEKTNCELKVCFYLNLRGDRWIQDEIEFGYIEAPHKGFVVLDSR DGNLKDFFVKELLGPDFGYVTREPLFESVTSLSDFGNLEVSPPVTVNGKTYPL GRILIGSSFPLSGGRRMTKVVRDFLKAQQVQAPVELYSDWLTGVHDEFMSF VPIPGTKKFLLLMASTSACYKLFREKQKDGHGGEAIMFKGLGGMSSKRITINKILS NESLVQENLYFQRCLDWNRDILKKEGLTEQDIIDLPAFKMDEDHRARAFFPN MVNMIVLDKDLGIPKPFQVEEECCLEMHVRLGLEPLGLECTFIDDISAYHKF LGEVHCGTNNRRKPFTEFKWWHMVP
Research Area	Epigenetics and Nuclear Signaling
Source	Yeast
Target Names	PADI2
Protein Names	Recommended name: Protein-arginine deiminase type-2 EC= 3.5.3.15 Alternative name(s): PAD-H19 Peptidylarginine deiminase II Protein-arginine deiminase type II
Expression Region	1-665aa
Notes	Repeated freezing and thawing is not recommended. Store working aliquots at 4°C for up to one week.
Tag Info	N-terminal 6xHis-tagged
Mol. Weight	77.6kDa


Protein Length

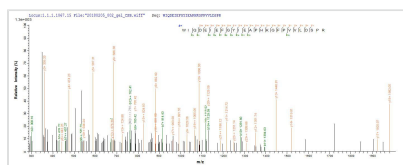
Full Length

Image


(Tris-Glycine gel) Discontinuous SDS-PAGE (reduced) with 5% enrichment gel and 15% separation gel.



Based on the SEQUEST from database of Yeast host and target protein, the LC-MS/MS Analysis result of CSB-YP896493HU could indicate that this peptide derived from Yeast-expressed Homo sapiens (Human) PADI2.



Based on the SEQUEST from database of Yeast host and target protein, the LC-MS/MS Analysis result of CSB-YP896493HU could indicate that this peptide derived from Yeast-expressed Homo sapiens (Human) PADI2.

Reconstitution

We recommend that this vial be briefly centrifuged prior to opening to bring the contents to the bottom. Please reconstitute protein in deionized sterile water to a concentration of 0.1-1.0 mg/mL. We recommend to add 5-50% of glycerol (final concentration) and aliquot for long-term storage at -20°C/-80°C. Our default final concentration of glycerol is 50%. Customers could use it as reference.

Shelf Life

The shelf life is related to many factors, storage state, buffer ingredients, storage temperature and the stability of the protein itself. Generally, the shelf life of liquid form is 6 months at -20°C/-80°C. The shelf life of lyophilized form is 12 months at -20°C/-80°C.