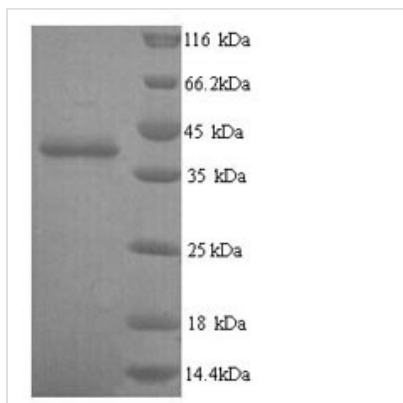




Recombinant Human Talin-2 (TLN2), partial

Product Code	CSB-YP897282HU
Relevance	As a major component of focal adhesion plaques that links integrin to the actin cytoskeleton, may play an important role in cell adhesion. Recruits PIP5K1C to focal adhesion plaques and strongly activates its kinase activity .
Abbreviation	Recombinant Human TLN2 protein, partial
Storage	The shelf life is related to many factors, storage state, buffer ingredients, storage temperature and the stability of the protein itself. Generally, the shelf life of liquid form is 6 months at -20°C/-80°C. The shelf life of lyophilized form is 12 months at -20°C/-80°C.
Uniprot No.	Q9Y4G6
Product Type	Recombinant Protein
Immunogen Species	Homo sapiens (Human)
Purity	≥ 90% as determined by SDS-PAGE.
Sequence	RPQKIRMLDGSVKTVMVDDSKTVGELLVTICSRIGITNYEEYSLIQETIEEKKEE GTGTLKKDRTLLRDERKMEKCLKAKLHTDDDLNWLDSRTRFREQGVDENETLL LRRKFFYSDQNVDSDRPVQLNLLYVQARDDILNGSHPVSFEKACEFGGFQAQI QFGPHVEHKHKPGFLDLKEFLPKEYIKQRGAEKRFQEHKNCGEMSEIEAKVK YVKLARSLRITYGVSFFLVKEKMKGKNKLVPRLLGITKDSVMRVDEKTKVQLQE WPLTTVKRWAASPKSFTLDFGEYQESYYSVQTTEGEQISQLIAGYIDIILKKK
Research Area	Signal Transduction
Source	Yeast
Target Names	TLN2
Protein Names	Recommended name: Talin-2
Expression Region	88-406aa
Notes	Repeated freezing and thawing is not recommended. Store working aliquots at 4°C for up to one week.
Tag Info	N-terminal 6xHis-tagged
Mol. Weight	39.1kDa
Protein Length	Partial
Image	



(Tris-Glycine gel) Discontinuous SDS-PAGE (reduced) with 5% enrichment gel and 15% separation gel.

Reconstitution

We recommend that this vial be briefly centrifuged prior to opening to bring the contents to the bottom. Please reconstitute protein in deionized sterile water to a concentration of 0.1-1.0 mg/mL. We recommend to add 5-50% of glycerol (final concentration) and aliquot for long-term storage at -20°C/-80°C. Our default final concentration of glycerol is 50%. Customers could use it as reference.

Shelf Life

The shelf life is related to many factors, storage state, buffer ingredients, storage temperature and the stability of the protein itself. Generally, the shelf life of liquid form is 6 months at -20°C/-80°C. The shelf life of lyophilized form is 12 months at -20°C/-80°C.