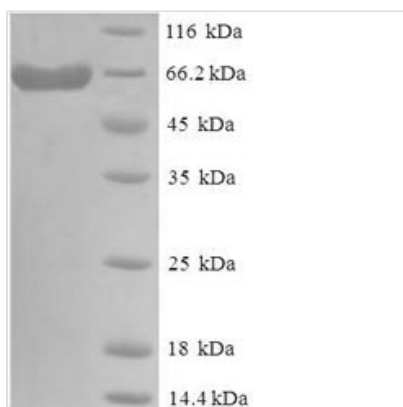




Recombinant Human Delta-like protein 3 (DLL3), partial

Product Code	CSB-EP882142HU
Relevance	Inhibits primary neurogenesis. May be required to divert neurons along a specific differentiation pathway. Plays a role in the formation of somite boundaries during segmentation of the paraxial mesoderm .
Abbreviation	Recombinant Human DLL3 protein, partial
Storage	The shelf life is related to many factors, storage state, buffer ingredients, storage temperature and the stability of the protein itself. Generally, the shelf life of liquid form is 6 months at -20°C/-80°C. The shelf life of lyophilized form is 12 months at -20°C/-80°C.
Uniprot No.	Q9NYJ7
Alias	Drosophila Delta homolog 3 ;Delta3
Product Type	Recombinant Protein
Immunogen Species	Homo sapiens (Human)
Purity	Greater than 90% as determined by SDS-PAGE.
Sequence	AGVFELQIHSFGPGPGAPRSPCSARLPCRLFFRVCLKPGLSEEAESPICAL GAALSARGPVYTEQPGAPAPDLPLPDGLLQVPFRDAWPGTFSFIIETWREELG DQIGGPAWSLLARVAGRRRLAAGGPWARDIQRAGAWELRFSYRARCEPPAV GTACTRLCRPRSAPSRGPGLRPCAPLEDECEAPLVCRAGCSPEHGFCEQP GECRCLEGWTGPLCTVPVSTSSCLSPRGPSSATTGCLVPGPGPCDGNPCAN GGSCSETPRSFECTCPRGFYGLRCEVSGVTCADGPCFNGGLCVGGADPDSA YICHCPPGFQGSNCEKRVDRCSLQPCRNGGLCLDLGHALRCRCRAGFAGPR CEHDLDDCAGRACANGGTCVEGGGAHRCSCALGFGRDCRERADPCAARP CAHGGRCYAHFSGLVACAPGYMGARCEFPVHPDGASALPAAPPGLRPGDP QRYL
Research Area	Developmental Biology
Source	E.coli
Target Names	DLL3
Expression Region	27-492aa
Notes	Repeated freezing and thawing is not recommended. Store working aliquots at 4°C for up to one week.
Tag Info	N-terminal 6xHis-SUMO-tagged
Mol. Weight	64.5kDa
Protein Length	Extracellular Domain
Image	



(Tris-Glycine gel) Discontinuous SDS-PAGE (reduced) with 5% enrichment gel and 15% separation gel.

Reconstitution

We recommend that this vial be briefly centrifuged prior to opening to bring the contents to the bottom. Please reconstitute protein in deionized sterile water to a concentration of 0.1-1.0 mg/mL. We recommend to add 5-50% of glycerol (final concentration) and aliquot for long-term storage at -20°C/-80°C. Our default final concentration of glycerol is 50%. Customers could use it as reference.

Shelf Life

The shelf life is related to many factors, storage state, buffer ingredients, storage temperature and the stability of the protein itself. Generally, the shelf life of liquid form is 6 months at -20°C/-80°C. The shelf life of lyophilized form is 12 months at -20°C/-80°C.