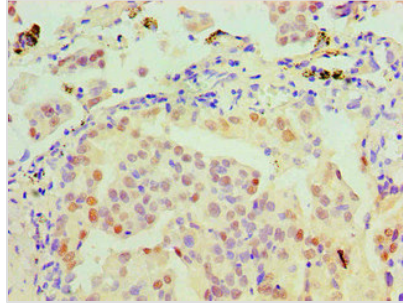




MSH6 Monoclonal Antibody

Product Code	CSB-MA0150321A0m
Storage	Upon receipt, store at -20°C or -80°C. Avoid repeated freeze.
Uniprot No.	P52701
Immunogen	Recombinant Human MSH6 Protein
Raised In	mouse
Species Reactivity	Human
Specificity	specific for human Msh6 denatured and native forms.
Tested Applications	ELISA,IHC;Recommended dilution:IHC:1:50-1:500
Relevance	<p>This gene encodes a member of the DNA mismatch repair MutS family. In <i>E. coli</i>, the MutS protein helps in the recognition of mismatched nucleotides prior to their repair. A highly conserved region of approximately 150 aa, called the Walker-A adenine nucleotide binding motif, exists in MutS homologs. The encoded protein heterodimerizes with MSH2 to form a mismatch recognition complex that functions as a bidirectional molecular switch that exchanges ADP and ATP as DNA mismatches are bound and dissociated. Mutations in this gene may be associated with hereditary nonpolyposis colon cancer, colorectal cancer, and endometrial cancer. Transcripts variants encoding different isoforms have been described.</p>
Form	liquid
Conjugate	Non-conjugated
Storage Buffer	Preservative: 0.03% Proclin 300 Constituents: 50% Glycerol, 0.01M PBS, PH 7.4
Purification Method	>95%,protein G purified
Clonality	monoclonal
Alias	MutS Homolog 6 GTBP HSAP2 DNA Mismatch Repair Protein Msh6 G/T Mismatch-Binding Protein
Product Type	Monoclonal Antibody
Immunogen Species	Homo sapiens (Human)
Gene Names	MSH6
Clone No.	2C12F3
Image	



Immunohistochemical of paraffin-embedded Human lung cancer tissue using CSB-MA0150321A0m at dilution of 1:200.