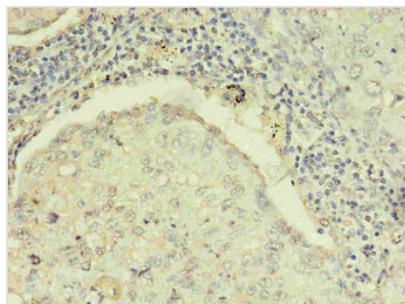




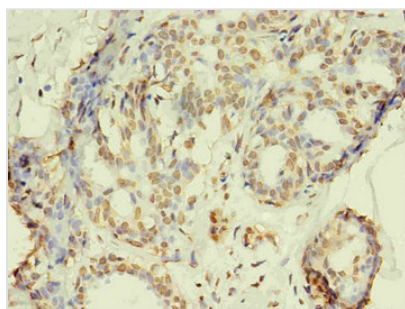
# RRM1 Monoclonal Antibody

<b>Product Code</b>	CSB-MA0205181A0m
<b>Storage</b>	Upon receipt, store at -20°C or -80°C. Avoid repeated freeze.
<b>Uniprot No.</b>	P23921
<b>Immunogen</b>	Recombinant Human RRM1 Protein
<b>Raised In</b>	mouse
<b>Species Reactivity</b>	Human
<b>Specificity</b>	specific for human RRM1 denatured and native forms.
<b>Tested Applications</b>	ELISA,IHC;Recommended dilution:IHC:1:50-1:500
<b>Relevance</b>	This gene encodes one of two non-identical subunits that constitute ribonucleoside-diphosphate reductase, an enzyme essential for the production of deoxyribonucleotides prior to DNA synthesis in S phase of dividing cells.It is one of several genes located in the imprinted gene domain of 11p15.5, an important tumor-suppressor gene region. Alterations in this region have been associated with the Beckwith-Wiedemann syndrome, Wilms tumor,rhabdomyosarcoma, adrenocrotical carcinoma, and lung, ovarian, and breast cancer. This gene may play a role in malignancies and disease that involve this region.
<b>Form</b>	liquid
<b>Conjugate</b>	Non-conjugated
<b>Storage Buffer</b>	Preservative: 0.03% Proclin 300 Constituents: 50% Glycerol, 0.01M PBS, PH 7.4
<b>Purification Method</b>	>95%,protein G purified
<b>Clonality</b>	monoclonal
<b>Alias</b>	Ribonucleotide Reductase M1 RRM1 RR1
<b>Product Type</b>	Monoclonal Antibody
<b>Immunogen Species</b>	Homo sapiens (Human)
<b>Target Names</b>	RRM1
<b>Clone No.</b>	3D6H5

## Image



Immunohistochemistry of paraffin-embedded human lung cancer using CSB-MA0205181A0m in 30µg/ml dilute concentrations.



Immunohistochemistry of paraffin-embedded human breast cancer using CSB-MA0205181A0m in 30 $\mu$ g/ml dilute concentrations.

---

**Usage**

For Research Use Only. Not for use in diagnostic or therapeutic procedures.