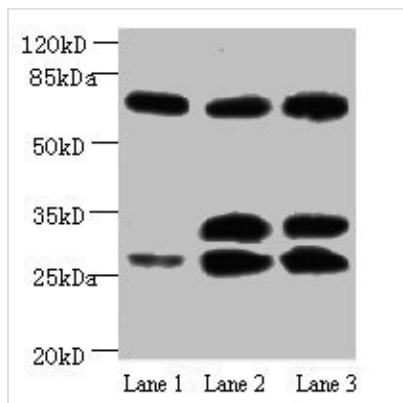




APP Monoclonal Antibody

Product Code	CSB-MA0019501A0m
Storage	Upon receipt, store at -20°C or -80°C. Avoid repeated freeze.
Uniprot No.	P05067
Immunogen	Recombinant Human APP Protein
Raised In	Mouse
Species Reactivity	Human, Mouse
Tested Applications	ELISA, WB, IHC, IF; Recommended dilution: WB:1:500-1:5000, IHC:1:50-1:500, IF:1:50-1:200
Relevance	<p>This gene encodes a cell surface receptor and transmembrane precursor protein that is cleaved by secretases to form a number of peptides. Some of these peptides are secreted and can bind to the acetyltransferase complex APBB1/TIP60 to promote transcriptional activation, while others form the protein basis of the amyloid plaques found in the brains of patients with Alzheimer disease. Mutations in this gene have been implicated in autosomal dominant Alzheimer disease and cerebroarterial amyloidosis (cerebral amyloid angiopathy). Multiple transcript variants encoding several different isoforms have been found for this gene.</p>
Form	Liquid
Conjugate	Non-conjugated
Storage Buffer	Preservative: 0.03% Proclin 300 Constituents: 50% Glycerol, 0.01M PBS, PH 7.4
Purification Method	>95%, protein G purified
Isotype	IgG2b
Clonality	Monoclonal
Product Type	Monoclonal Antibody
Immunogen Species	Homo sapiens (Human)
Target Names	APP
Clone No.	5A11E5
Image	



Western blot

All lanes: Amyloid beta A4 antibody at 1µg/ml

Lane 1: Mouse heart tissue

Lane 2: Mouse kidney tissue

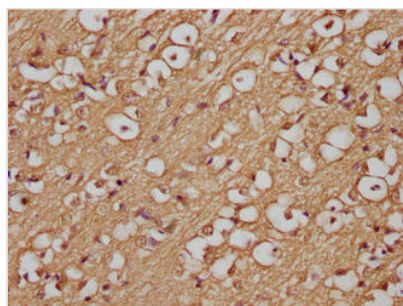
Lane 3: Mouse lung tissue

Secondary

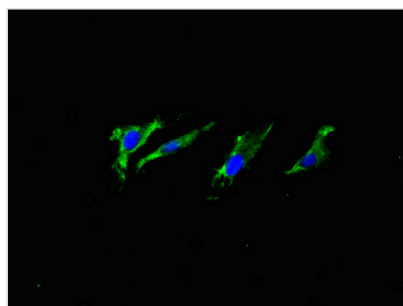
Goat polyclonal to Mouse IgG at 1/15000 dilution

Predicted band size: 30, 35, 72, 80 kDa

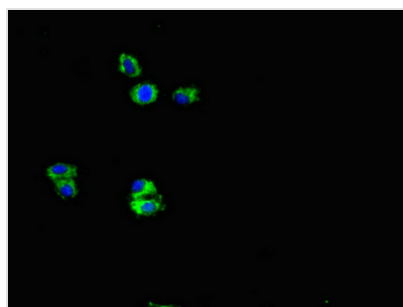
Observed band size: 30, 35, 72 kDa



Immunohistochemistry of paraffin-embedded human brain tissue using CSB-MA0019501A0m at dilution of 1:200



Immunofluorescent analysis of HeLa cells using CSB-MA0019501A0m at dilution of 1:100 and Alexa Fluor 488-conjugated AffiniPure Goat Anti-Rabbit IgG(H+L)



Immunofluorescent analysis of HepG2 cells using CSB-MA0019501A0m at dilution of 1:100 and Alexa Fluor 488-conjugated AffiniPure Goat Anti-Rabbit IgG(H+L)

Usage

For Research Use Only. Not for use in diagnostic or therapeutic procedures.