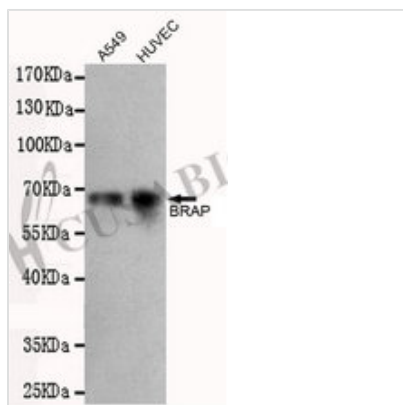




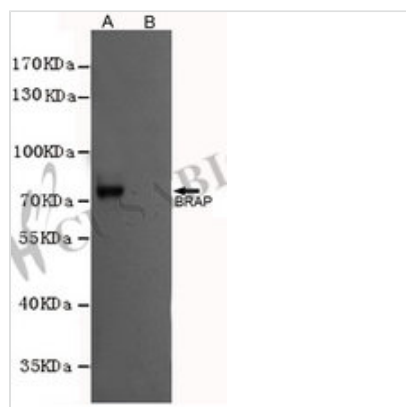
# BRAP Monoclonal Antibody

|                            |   |
|----------------------------|---|
| <b>Product Code</b>        | CSB-MA097714  |
| <b>Storage</b>             | Upon receipt, store at -20°C or -80°C. Avoid repeated freeze.   |
| <b>Immunogen</b>           | Purified recombinant Human BRAP protein fragments expressed in E.coli.  |
| <b>Raised In</b>           | Mouse   |
| <b>Species Reactivity</b>  | Human   |
| <b>Specificity</b>         | This antibody detects endogenous levels of BRAP and does not cross-react with related proteins.   |
| <b>Tested Applications</b> | ELISA, WB; Recommended dilution: WB:1:500-1:5000  |
| <b>Relevance</b>           | Negatively regulates MAP kinase activation by limiting the formation of Raf/MEK complexes probably by inactivation of the KSR1 scaffold protein. Also acts as a Ras responsive E3 ubiquitin ligase that, on activation of Ras, is modified by auto-polyubiquitination resulting in the release of inhibition of Raf/MEK complex formation. May also act as a cytoplasmic retention protein with a role in regulating nuclear transport. |
| <b>Form</b>                | Liquid  |
| <b>Storage Buffer</b>      | Purified mouse monoclonal antibody in PBS(pH 7.4) containing with 0.02% sodium azide and 50% glycerol.  |
| <b>Purification Method</b> | Affinity purified   |
| <b>Isotype</b>             | IgG1  |
| <b>Clonality</b>           | Monoclonal  |
| <b>Alias</b>               | 3010002G07Rik; BRAP2; BRCA1 associated protein; EC 6.3.2.; Galectin 2 binding protein; IMP; Impedes mitogenic signal propagation; Renal carcinoma antigen NY REN 63; RING finger protein 52; RNF52; zgc:92894.  |
| <b>Product Type</b>        | Monoclonal Antibody   |
| <b>Immunogen Species</b>   | Homo sapiens (Human)  |
| <b>Clone No.</b>           | 20F7  |

## Image



Western blot detection of BRAP in A549 and HUVEC cell lysates using BRAP antibody (1:500 diluted). Predicted band size: 67 kDa Observed band size: 67 kDa



Western blot analysis of extracts from CHO-K1 cells, transfected with a human pFLAG-CMV2-BRAP construct (A) or transfected with a human pFLAG-CMV2 construct (B), using BRAP antibody (1:1000 diluted).

**Usage**

For Research Use Only. Not for use in diagnostic or therapeutic procedures.