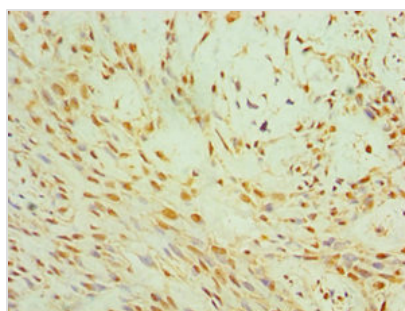




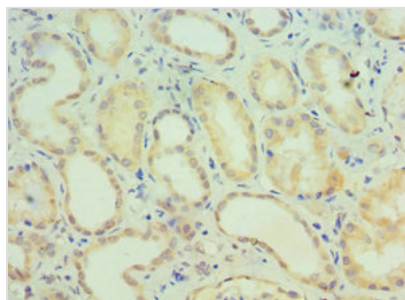
CIDEC Antibody

Product Code	CSB-PA842636ESR1HU
Storage	Upon receipt, store at -20°C or -80°C. Avoid repeated freeze.
Uniprot No.	Q96AQ7
Immunogen	Recombinant Human Cell death activator CIDE-3 protein (1-238AA)
Raised In	Rabbit
Species Reactivity	Human
Tested Applications	ELISA, IHC; Recommended dilution: IHC:1:20-1:200
Form	Liquid
Conjugate	Non-conjugated
Storage Buffer	PBS with 0.02% sodium azide, 50% glycerol, pH7.3.
Purification Method	Antigen Affinity Purified
Isotype	IgG
Clonality	Polyclonal
Alias	Cell death activator CIDE-3 (Cell death-inducing DFFA-like effector protein C) (Fat-specific protein FSP27 homolog), CIDEC, FSP27
Immunogen Species	Homo sapiens (Human)
Research Area	Cell Biology
Target Names	CIDEC

Image



Immunohistochemistry of paraffin-embedded human breast cancer using CSB-PA842636ESR1HU at dilution of 1:100



Immunohistochemistry of paraffin-embedded human kidney tissue using CSB-PA842636ESR1HU at dilution of 1:100

Usage

For Research Use Only. Not for use in diagnostic or therapeutic procedures.