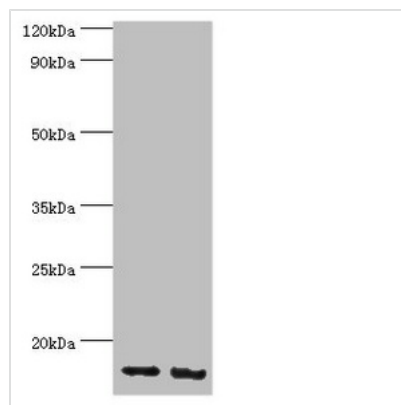




RBX1 Antibody

Product Code	CSB-PA019496ESR1HU
Storage	Upon receipt, store at -20°C or -80°C. Avoid repeated freeze.
Uniprot No.	P62877
Immunogen	Recombinant Human E3 ubiquitin-protein ligase RBX1 protein (1-108AA)
Raised In	Rabbit
Species Reactivity	Human
Tested Applications	ELISA, WB, IHC; Recommended dilution: WB:1:500-1:2000, IHC:1:20-1:200
Form	Liquid
Conjugate	Non-conjugated
Storage Buffer	PBS with 0.02% sodium azide, 50% glycerol, pH7.3.
Purification Method	Antigen Affinity Purified
Isotype	IgG
Clonality	Polyclonal
Alias	E3 ubiquitin-protein ligase RBX1 (EC 2.3.2.-) (E3 ubiquitin-protein transferase RBX1) (Protein ZYP) (RING finger protein 75) (RING-box protein 1) (Rbx1) (Regulator of cullins 1) [Cleaved into: E3 ubiquitin-protein ligase RBX1, N-terminally processed (E3 ubiquitin-protein transferase RBX1, N-terminally processed)], RBX1, RNF75 ROC1
Immunogen Species	Homo sapiens (Human)
Research Area	Cell Biology
Target Names	RBX1

Image



Western blot

All lanes: E3 ubiquitin-protein ligase RBX1 antibody at 4μg/ml

Lane 1: HeLa whole cell lysate

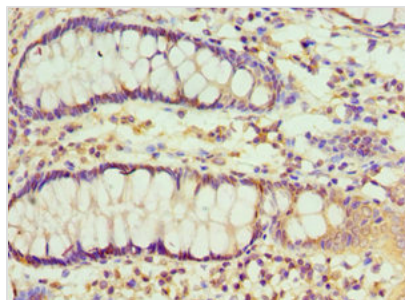
Lane 2: HepG2 whole cell lysate

Secondary

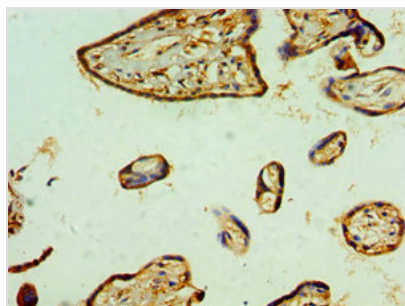
Goat polyclonal to rabbit IgG at 1/10000 dilution

Predicted band size: 12 kDa

Observed band size: 12 kDa



Immunohistochemistry of paraffin-embedded human colon tissue using CSB-PA019496ESR1HU at dilution of 1:100



Immunohistochemistry of paraffin-embedded human placenta tissue using CSB-PA019496ESR1HU at dilution of 1:100

Usage

For Research Use Only. Not for use in diagnostic or therapeutic procedures.