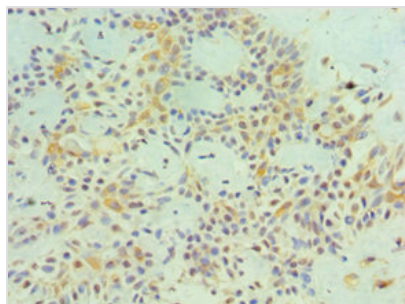




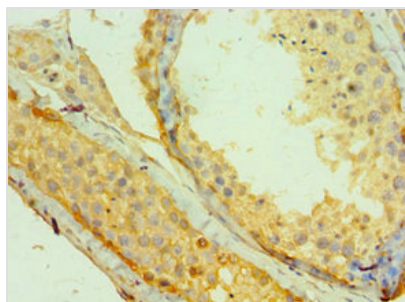
MAGEA1 Antibody

Product Code	CSB-PA013323ESR2HU
Storage	Upon receipt, store at -20°C or -80°C. Avoid repeated freeze.
Uniprot No.	P43355
Immunogen	Recombinant Human Melanoma-associated antigen 1 protein (1-309AA)
Raised In	Rabbit
Species Reactivity	Human
Tested Applications	ELISA, IHC, IP; Recommended dilution: IHC:1:20-1:200, IP:1:200-1:2000
Form	Liquid
Conjugate	Non-conjugated
Storage Buffer	PBS with 0.02% sodium azide, 50% glycerol, pH7.3.
Purification Method	Antigen Affinity Purified
Isotype	IgG
Clonality	Polyclonal
Alias	Melanoma-associated antigen 1 (Antigen MZ2-E) (Cancer/testis antigen 1.1) (CT1.1) (MAGE-1 antigen), MAGEA1, MAGE1 MAGE1A
Immunogen Species	Homo sapiens (Human)
Research Area	Tags & Cell Markers
Target Names	MAGEA1

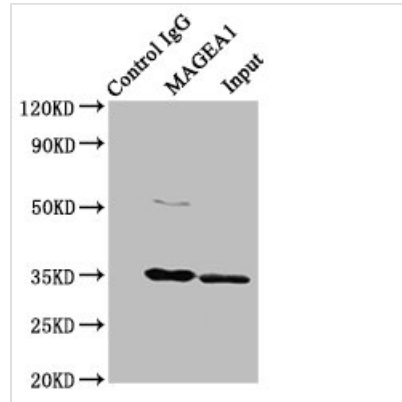
Image



Immunohistochemistry of paraffin-embedded human breast cancer using CSB-PA013323ESR2HU at dilution of 1:100



Immunohistochemistry of paraffin-embedded human testis tissue using CSB-PA013323ESR2HU at dilution of 1:100



Immunoprecipitating MAGEA1 in HeLa whole cell lysate

Lane 1: Rabbit control IgG instead of CSB-PA013323ESR2HU in HeLa whole cell lysate. For western blotting, a HRP-conjugated Protein G antibody was used as the secondary antibody (1/2000)

Lane 2: CSB-PA013323ESR2HU (8 μ g) + HeLa whole cell lysate (500 μ g)

Lane 3: HeLa whole cell lysate (10 μ g)

Usage

For Research Use Only. Not for use in diagnostic or therapeutic procedures.