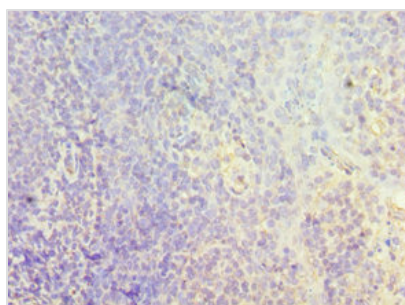




CMA1 Antibody

Product Code	CSB-PA005599ESR2HU
Storage	Upon receipt, store at -20°C or -80°C. Avoid repeated freeze.
Uniprot No.	P23946
Immunogen	Recombinant Human Chymase protein (1-247AA)
Raised In	Rabbit
Species Reactivity	Human
Tested Applications	ELISA, IHC; Recommended dilution: IHC:1:20-1:200
Form	Liquid
Conjugate	Non-conjugated
Storage Buffer	PBS with 0.02% sodium azide, 50% glycerol, pH7.3.
Purification Method	Antigen Affinity Purified
Isotype	IgG
Clonality	Polyclonal
Alias	Chymase (EC 3.4.21.39) (Alpha-chymase) (Mast cell protease I), CMA1, CYH CYM
Immunogen Species	Homo sapiens (Human)
Research Area	Immunology
Target Names	CMA1

Image



Immunohistochemistry of paraffin-embedded human tonsil tissue using CSB-PA005599ESR2HU at dilution of 1:100

Usage

For Research Use Only. Not for use in diagnostic or therapeutic procedures.