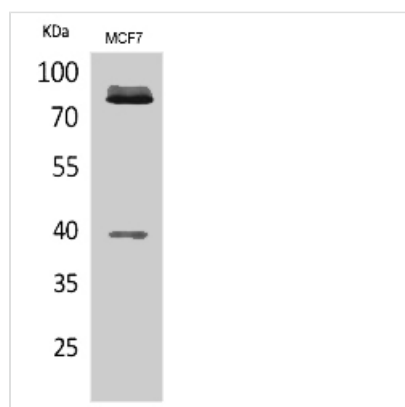




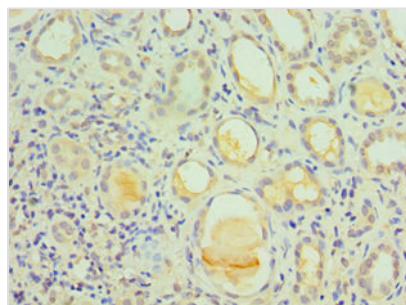
IL1R1 Antibody

Product Code	CSB-PA011621ESR1HU
Storage	Upon receipt, store at -20°C or -80°C. Avoid repeated freeze.
Uniprot No.	P14778
Immunogen	Recombinant Human Interleukin-1 receptor type 1 protein (31-80AA)
Raised In	Rabbit
Species Reactivity	Human, Mouse
Tested Applications	ELISA, WB, IHC; Recommended dilution: WB:1:500-1:2000, IHC:1:20-1:200
Form	Liquid
Conjugate	Non-conjugated
Storage Buffer	PBS with 0.02% sodium azide, 50% glycerol, pH7.3.
Purification Method	Antigen Affinity Purified
Isotype	IgG
Clonality	Polyclonal
Product Type	Polyclonal Antibody
Immunogen Species	Homo sapiens (Human)
Research Area	Immunology
Target Names	IL1R1

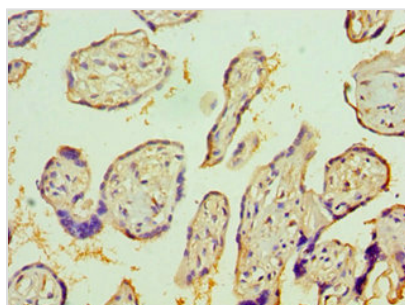
Image



Western Blot analysis of MCF7 cells using CSB-PA011621ESR1HU. Secondary antibody(HRP* Goat Anti Rabbit IgG(H+L)) was diluted at 1:20000



Immunohistochemistry of paraffin-embedded human kidney tissue using CSB-PA011621ESR1HU at dilution of 1:100



Immunohistochemistry of paraffin-embedded human placenta tissue using CSB-PA011621ESR1HU at dilution of 1:100