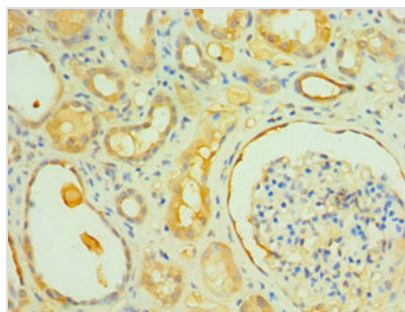




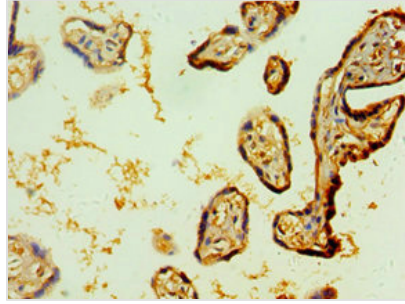
IL1R1 Antibody

Product Code	CSB-PA011621ESR2HU
Storage	Upon receipt, store at -20°C or -80°C. Avoid repeated freeze.
Uniprot No.	P14778
Immunogen	Recombinant Human Interleukin-1 receptor type 1 protein (18-320AA)
Raised In	Rabbit
Species Reactivity	Human
Tested Applications	ELISA, IHC; Recommended dilution: IHC:1:20-1:200
Form	Liquid
Conjugate	Non-conjugated
Storage Buffer	PBS with 0.02% sodium azide, 50% glycerol, pH7.3.
Purification Method	Antigen Affinity Purified
Isotype	IgG
Clonality	Polyclonal
Alias	Interleukin-1 receptor type 1 (IL-1R-1) (IL-1RT-1) (IL-1RT1) (CD121 antigen-like family member A) (Interleukin-1 receptor alpha) (IL-1R-alpha) (Interleukin-1 receptor type I) (p80) (CD antigen CD121a) [Cleaved into: Interleukin-1 receptor type 1, membrane form (mIL-1R1) (mIL-1RI); Interleukin-1 receptor type 1, soluble form (sIL-1R1) (sIL-1RI)], IL1R1, IL1R IL1RA IL1RT1
Immunogen Species	Homo sapiens (Human)
Research Area	Immunology
Target Names	IL1R1

Image



Immunohistochemistry of paraffin-embedded human kidney tissue using CSB-PA011621ESR2HU at dilution of 1:100



Immunohistochemistry of paraffin-embedded human placenta tissue using CSB-PA011621ESR2HU at dilution of 1:100

Usage

For Research Use Only. Not for use in diagnostic or therapeutic procedures.