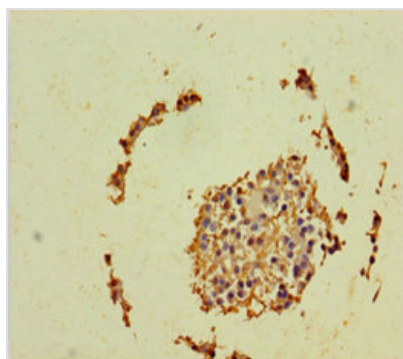




GINS2 Antibody

Product Code	CSB-PA896481LA01HU
Storage	Upon receipt, store at -20°C or -80°C. Avoid repeated freeze.
Uniprot No.	Q9Y248
Immunogen	Recombinant Human DNA replication complex GINS protein PSF2 protein (1-185AA)
Raised In	Rabbit
Species Reactivity	Human
Tested Applications	ELISA, IHC; Recommended dilution: IHC:1:20-1:200
Form	Liquid
Conjugate	Non-conjugated
Storage Buffer	Preservative: 0.03% Proclin 300 Constituents: 50% Glycerol, 0.01M PBS, PH 7.4
Purification Method	>95%, Protein G purified
Isotype	IgG
Clonality	Polyclonal
Alias	DNA replication complex GINS protein PSF2 (GINS complex subunit 2), GINS2, PSF2
Immunogen Species	Homo sapiens (Human)
Research Area	Cell Biology
Target Names	GINS2

Image



Immunohistochemistry of paraffin-embedded human breast cancer using CSB-PA896481LA01HU at dilution of 1:100