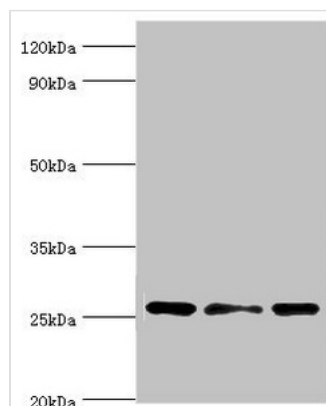




# CLIC1 Antibody

|                            |  |
|----------------------------|--|
| <b>Product Code</b>        | CSB-PA005545ESR1HU   |
| <b>Storage</b>             | Upon receipt, store at -20°C or -80°C. Avoid repeated freeze.  |
| <b>Uniprot No.</b>         | O00299   |
| <b>Immunogen</b>           | Recombinant Human Chloride intracellular channel protein 1 protein (42-241AA)  |
| <b>Raised In</b>           | Rabbit   |
| <b>Species Reactivity</b>  | Human  |
| <b>Tested Applications</b> | ELISA, WB, IHC; Recommended dilution: WB:1:500-1:5000, IHC:1:20-1:200  |
| <b>Form</b>                | Liquid   |
| <b>Conjugate</b>           | Non-conjugated   |
| <b>Storage Buffer</b>      | PBS with 0.02% sodium azide, 50% glycerol, pH7.3.  |
| <b>Purification Method</b> | Antigen Affinity Purified  |
| <b>Isotype</b>             | IgG  |
| <b>Clonality</b>           | Polyclonal   |
| <b>Alias</b>               | Chloride intracellular channel protein 1 (Chloride channel ABP) (Nuclear chloride ion channel 27) (NCC27) (Regulatory nuclear chloride ion channel protein) (hRNCC), CLIC1, G6 NCC27 |
| <b>Immunogen Species</b>   | Homo sapiens (Human)   |
| <b>Research Area</b>       | Signal Transduction  |
| <b>Target Names</b>        | CLIC1  |

## Image



### Western blot

All lanes: Chloride intracellular channel protein 1 antibody at 4µg/ml

Lane 1: HeLa whole cell lysate

Lane 2: Jurkat whole cell lysate

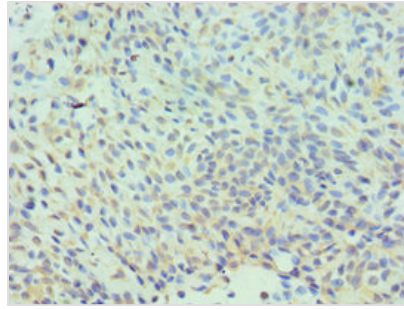
Lane 3: MCF-7 whole cell lysate

Secondary

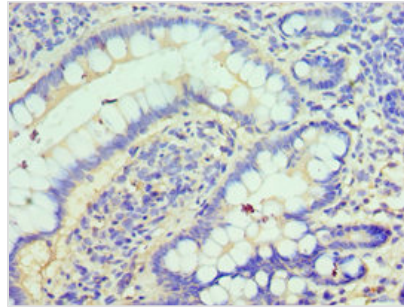
Goat polyclonal to rabbit IgG at 1/10000 dilution

Predicted band size: 27 kDa

Observed band size: 27 kDa



Immunohistochemistry of paraffin-embedded human breast cancer using CSB-PA005545ESR1HU at dilution of 1:100



Immunohistochemistry of paraffin-embedded human small intestine tissue using CSB-PA005545ESR1HU at dilution of 1:100

## Usage

For Research Use Only. Not for use in diagnostic or therapeutic procedures.