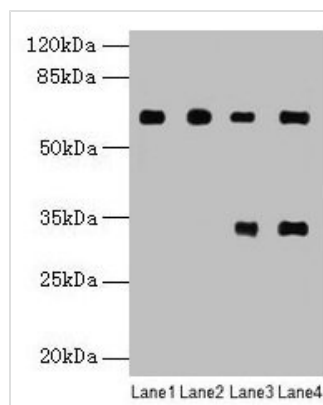




# PGM1 Antibody

<b>Product Code</b>	CSB-PA017866HA01HU
<b>Storage</b>	Upon receipt, store at -20°C or -80°C. Avoid repeated freeze.
<b>Uniprot No.</b>	P36871
<b>Immunogen</b>	Recombinant Human Phosphoglucomutase-1 protein (1-562AA)
<b>Raised In</b>	Rabbit
<b>Species Reactivity</b>	Human
<b>Tested Applications</b>	ELISA, WB, IHC, IF; Recommended dilution: WB:1:500-1:2000, IHC:1:20-1:200, IF:1:50-1:200
<b>Form</b>	Liquid
<b>Conjugate</b>	Non-conjugated
<b>Storage Buffer</b>	Preservative: 0.03% Proclin 300 Constituents: 50% Glycerol, 0.01M PBS, PH 7.4
<b>Purification Method</b>	>95%, Protein G purified
<b>Isotype</b>	IgG
<b>Clonality</b>	Polyclonal
<b>Alias</b>	Phosphoglucomutase-1 (PGM 1) (EC 5.4.2.2) (Glucose phosphomutase 1), PGM1
<b>Immunogen Species</b>	Homo sapiens (Human)
<b>Research Area</b>	Signal Transduction
<b>Target Names</b>	PGM1

## Image



### Western blot

All lanes: PGM1 antibody at 6μg/ml

Lane 1: U251 whole cell lysate

Lane 2: U937 whole cell lysate

Lane 3: Jurkat whole cell lysate

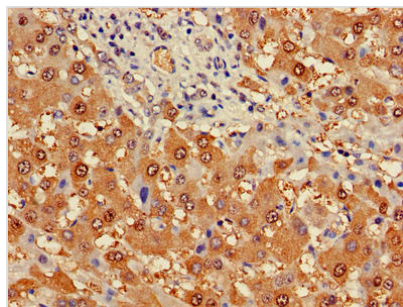
Lane 4: Hela whole cell lysate

Secondary

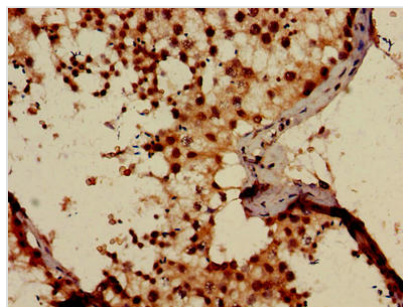
Goat polyclonal to rabbit IgG at 1/10000 dilution

Predicted band size: 62, 64, 41 kDa

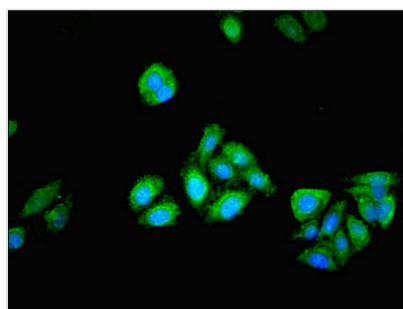
Observed band size: 62 kDa



Immunohistochemistry of paraffin-embedded human liver cancer using CSB-PA017866HA01HU at dilution of 1:100



Immunohistochemistry of paraffin-embedded human testis tissue using CSB-PA017866HA01HU at dilution of 1:100



Immunofluorescent analysis of HepG2 cells using CSB-PA017866HA01HU at dilution of 1:100 and Alexa Fluor 488-conjugated AffiniPure Goat Anti-Rabbit IgG(H+L)