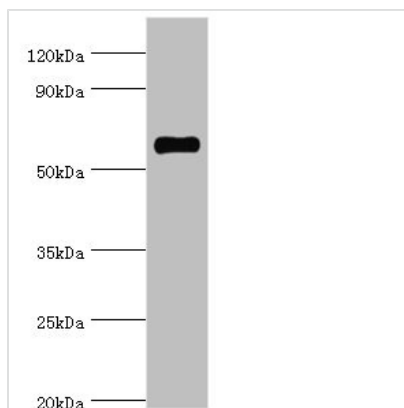




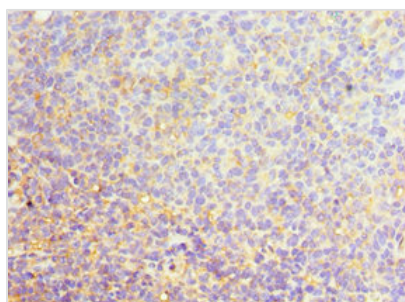
# SRSF4 Antibody

|                            |  |
|----------------------------|--|
| <b>Product Code</b>        | CSB-PA021156ESR2HU   |
| <b>Storage</b>             | Upon receipt, store at -20°C or -80°C. Avoid repeated freeze.  |
| <b>Uniprot No.</b>         | Q08170   |
| <b>Immunogen</b>           | Recombinant Human Serine/arginine-rich splicing factor 4 protein (1-180AA)   |
| <b>Raised In</b>           | Rabbit   |
| <b>Species Reactivity</b>  | Human  |
| <b>Tested Applications</b> | ELISA, WB, IHC; Recommended dilution: WB:1:200-1:1000, IHC:1:20-1:200  |
| <b>Form</b>                | Liquid   |
| <b>Conjugate</b>           | Non-conjugated   |
| <b>Storage Buffer</b>      | PBS with 0.02% sodium azide, 50% glycerol, pH7.3.  |
| <b>Purification Method</b> | Antigen Affinity Purified  |
| <b>Isotype</b>             | IgG  |
| <b>Clonality</b>           | Polyclonal   |
| <b>Alias</b>               | Serine/arginine-rich splicing factor 4 (Pre-mRNA-splicing factor SRP75) (SRP001LB) (Splicing factor, arginine/serine-rich 4), SRSF4, SFRS4 SRP75 |
| <b>Immunogen Species</b>   | Homo sapiens (Human)   |
| <b>Research Area</b>       | Epigenetics and Nuclear Signaling  |
| <b>Target Names</b>        | SRSF4  |

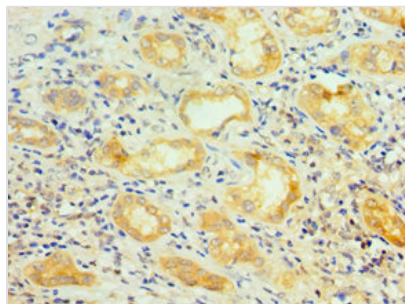
## Image



Western blot  
 All lanes: SRSF4 antibody at 4µg/ml + HeLa whole cell lysate  
 Secondary  
 Goat polyclonal to rabbit IgG at 1/10000 dilution  
 Predicted band size: 57 kDa  
 Observed band size: 57 kDa



Immunohistochemistry of paraffin-embedded human tonsil tissue using CSB-PA021156ESR2HU at dilution of 1:100



Immunohistochemistry of paraffin-embedded human kidney tissue using CSB-PA021156ESR2HU at dilution of 1:100

**Usage**

For Research Use Only. Not for use in diagnostic or therapeutic procedures.