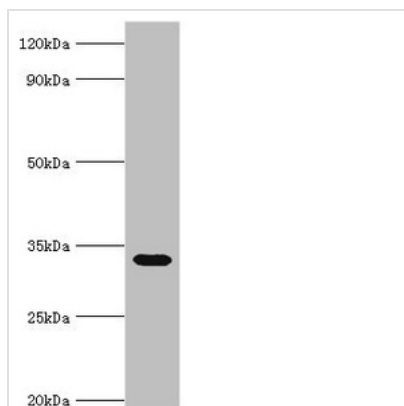




# STOM Antibody

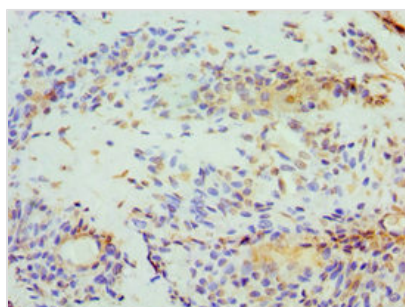
<b>Product Code</b>	CSB-PA022862ESR1HU
<b>Storage</b>	Upon receipt, store at -20°C or -80°C. Avoid repeated freeze.
<b>Uniprot No.</b>	P27105
<b>Immunogen</b>	Recombinant Human Erythrocyte band 7 integral membrane protein (55-288AA)
<b>Raised In</b>	Rabbit
<b>Species Reactivity</b>	Human, Mouse
<b>Tested Applications</b>	ELISA, WB, IHC; Recommended dilution: WB:1:200-1:1000, IHC:1:20-1:200
<b>Form</b>	Liquid
<b>Conjugate</b>	Non-conjugated
<b>Storage Buffer</b>	PBS with 0.02% sodium azide, 50% glycerol, pH7.3.
<b>Purification Method</b>	Antigen Affinity Purified
<b>Isotype</b>	IgG
<b>Clonality</b>	Polyclonal
<b>Alias</b>	Erythrocyte band 7 integral membrane protein (Protein 7.2b) (Stomatin), STOM, BND7 EPB72
<b>Immunogen Species</b>	Homo sapiens (Human)
<b>Research Area</b>	Neuroscience
<b>Target Names</b>	STOM

## Image

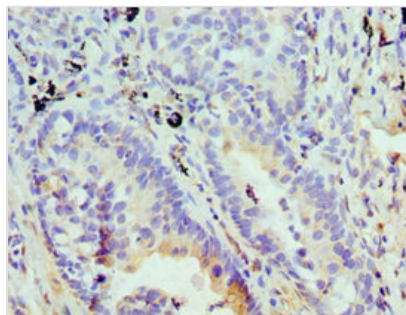


### Western blot

All lanes: Erythrocyte band 7 integral membrane protein antibody at 5µg/ml + Mouse liver tissue  
 Secondary  
 Goat polyclonal to rabbit IgG at 1/10000 dilution  
 Predicted band size: 32, 14 kDa  
 Observed band size: 32 kDa



Immunohistochemistry of paraffin-embedded human breast cancer using CSB-PA022862ESR1HU at dilution of 1:100



Immunohistochemistry of paraffin-embedded human lung cancer using CSB-PA022862ESR1HU at dilution of 1:100

**Usage**

For Research Use Only. Not for use in diagnostic or therapeutic procedures.