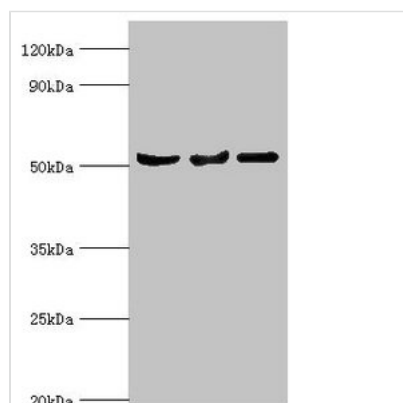




SERPINA10 Antibody

Product Code	CSB-PA891944ESR2HU
Storage	Upon receipt, store at -20°C or -80°C. Avoid repeated freeze.
Uniprot No.	Q9UK55
Immunogen	Recombinant Human Protein Z-dependent protease inhibitor protein (165-444AA)
Raised In	Rabbit
Species Reactivity	Human, Mouse
Tested Applications	ELISA, WB, IHC; Recommended dilution: WB:1:500-1:2000, IHC:1:20-1:200
Form	Liquid
Conjugate	Non-conjugated
Storage Buffer	PBS with 0.02% sodium azide, 50% glycerol, pH7.3.
Purification Method	Antigen Affinity Purified
Isotype	IgG
Clonality	Polyclonal
Alias	Protein Z-dependent protease inhibitor (PZ-dependent protease inhibitor) (PZI) (Serpin A10), SERPINA10, ZPI
Immunogen Species	Homo sapiens (Human)
Research Area	Cardiovascular
Target Names	SERPINA10

Image



Western blot

All lanes: Protein Z-dependent protease inhibitor antibody at 3µg/ml

Lane 1: Mouse liver tissue

Lane 2: HepG2 whole cell lysate

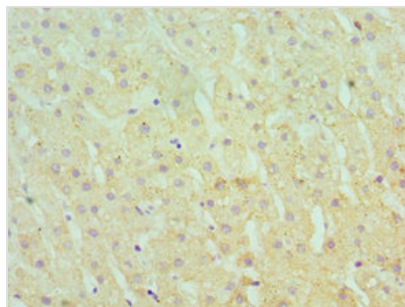
Lane 3: LO2 whole cell lysate

Secondary

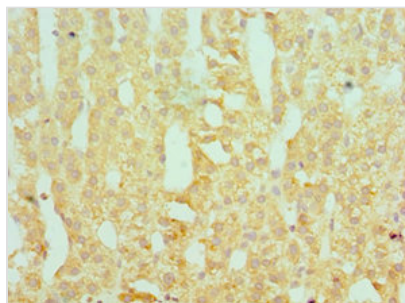
Goat polyclonal to rabbit IgG at 1/10000 dilution

Predicted band size: 51 kDa

Observed band size: 51 kDa



Immunohistochemistry of paraffin-embedded human liver tissue using CSB-PA891944ESR2HU at dilution of 1:100



Immunohistochemistry of paraffin-embedded human adrenal gland tissue using CSB-PA891944ESR2HU at dilution of 1:100

Usage

For Research Use Only. Not for use in diagnostic or therapeutic procedures.