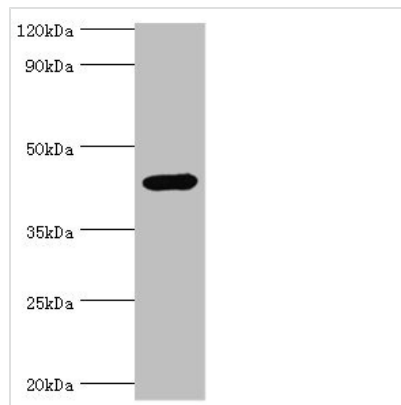




IL1R2 Antibody

Product Code	CSB-PA011622ESR1HU
Storage	Upon receipt, store at -20°C or -80°C. Avoid repeated freeze.
Uniprot No.	P27930
Immunogen	Recombinant Human Interleukin-1 receptor type 2 protein (20-320AA)
Raised In	Rabbit
Species Reactivity	Human, Mouse
Tested Applications	ELISA, WB; Recommended dilution: WB:1:200-1:1000
Form	Liquid
Conjugate	Non-conjugated
Storage Buffer	PBS with 0.02% sodium azide, 50% glycerol, pH7.3.
Purification Method	Antigen Affinity Purified
Isotype	IgG
Clonality	Polyclonal
Alias	Interleukin-1 receptor type 2 (IL-1R-2) (IL-1RT-2) (IL-1RT2) (CD121 antigen-like family member B) (CDw121b) (IL-1 type II receptor) (Interleukin-1 receptor beta) (IL-1R-beta) (Interleukin-1 receptor type II) (CD antigen CD121b) [Cleaved into: Interleukin-1 receptor type 2, membrane form (mIL-1R2) (mIL-1RII); Interleukin-1 receptor type 2, soluble form (sIL-1R2) (sIL-1RII)], IL1R2, IL1RB
Immunogen Species	Homo sapiens (Human)
Research Area	Immunology
Target Names	IL1R2

Image



Western blot

All lanes: Interleukin-1 receptor type 2 antibody at 3µg/ml + Mouse kidney tissue
 Secondary
 Goat polyclonal to rabbit IgG at 1/10000 dilution
 Predicted band size: 46, 34 kDa
 Observed band size: 46 kDa