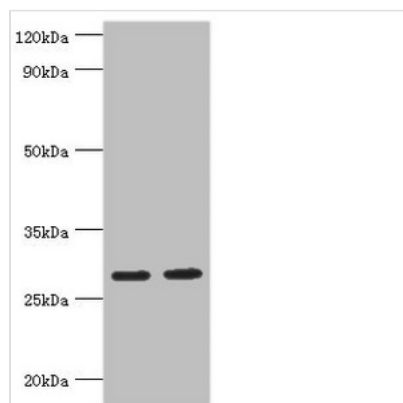




UBE2J2 Antibody

Product Code	CSB-PA843143ESR2HU
Storage	Upon receipt, store at -20°C or -80°C. Avoid repeated freeze.
Uniprot No.	Q8N2K1
Immunogen	Recombinant Human Ubiquitin-conjugating enzyme E2 J2 protein (1-230AA)
Raised In	Rabbit
Species Reactivity	Human, Rat
Tested Applications	ELISA, WB, IHC; Recommended dilution: WB:1:500-1:5000, IHC:1:20-1:200
Form	Liquid
Conjugate	Non-conjugated
Storage Buffer	PBS with 0.02% sodium azide, 50% glycerol, pH7.3.
Purification Method	Antigen Affinity Purified
Isotype	IgG
Clonality	Polyclonal
Alias	Ubiquitin-conjugating enzyme E2 J2 (EC 2.3.2.23) (E2 ubiquitin-conjugating enzyme J2) (Non-canonical ubiquitin-conjugating enzyme 2) (NCUBE-2), UBE2J2, NCUBE2
Immunogen Species	Homo sapiens (Human)
Research Area	Epigenetics and Nuclear Signaling
Target Names	UBE2J2

Image



Western blot

All lanes: Ubiquitin-conjugating enzyme E2 J2 antibody at 5µg/ml

Lane 1: HepG2 whole cell lysate

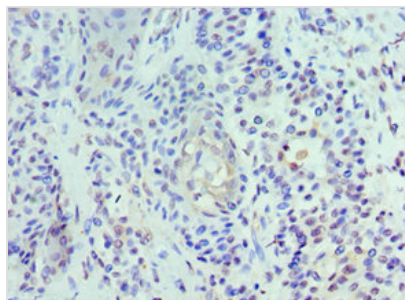
Lane 2: Rat small intestine tissue

Secondary

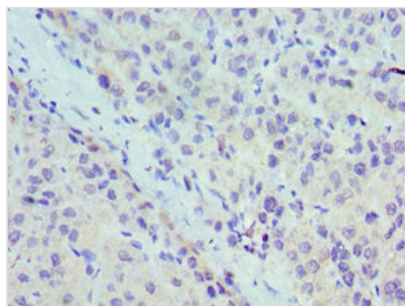
Goat polyclonal to rabbit IgG at 1/10000 dilution

Predicted band size: 29, 25, 31 kDa

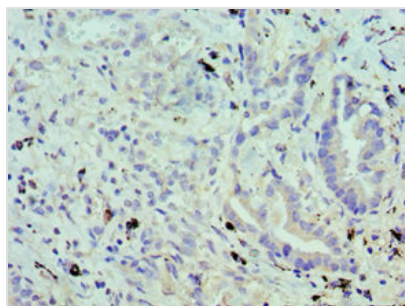
Observed band size: 29 kDa



Immunohistochemistry of paraffin-embedded human breast cancer using CSB-PA843143ESR2HU at dilution of 1:100



Immunohistochemistry of paraffin-embedded human liver cancer using CSB-PA843143ESR2HU at dilution of 1:100



Immunohistochemistry of paraffin-embedded human lung cancer using CSB-PA843143ESR2HU at dilution of 1:100

Usage

For Research Use Only. Not for use in diagnostic or therapeutic procedures.